

PLAT AND RECORD

409

Of a Survey on Section 7 T 3 R 14 E. of the 4 P. M. in Sohnstern Township

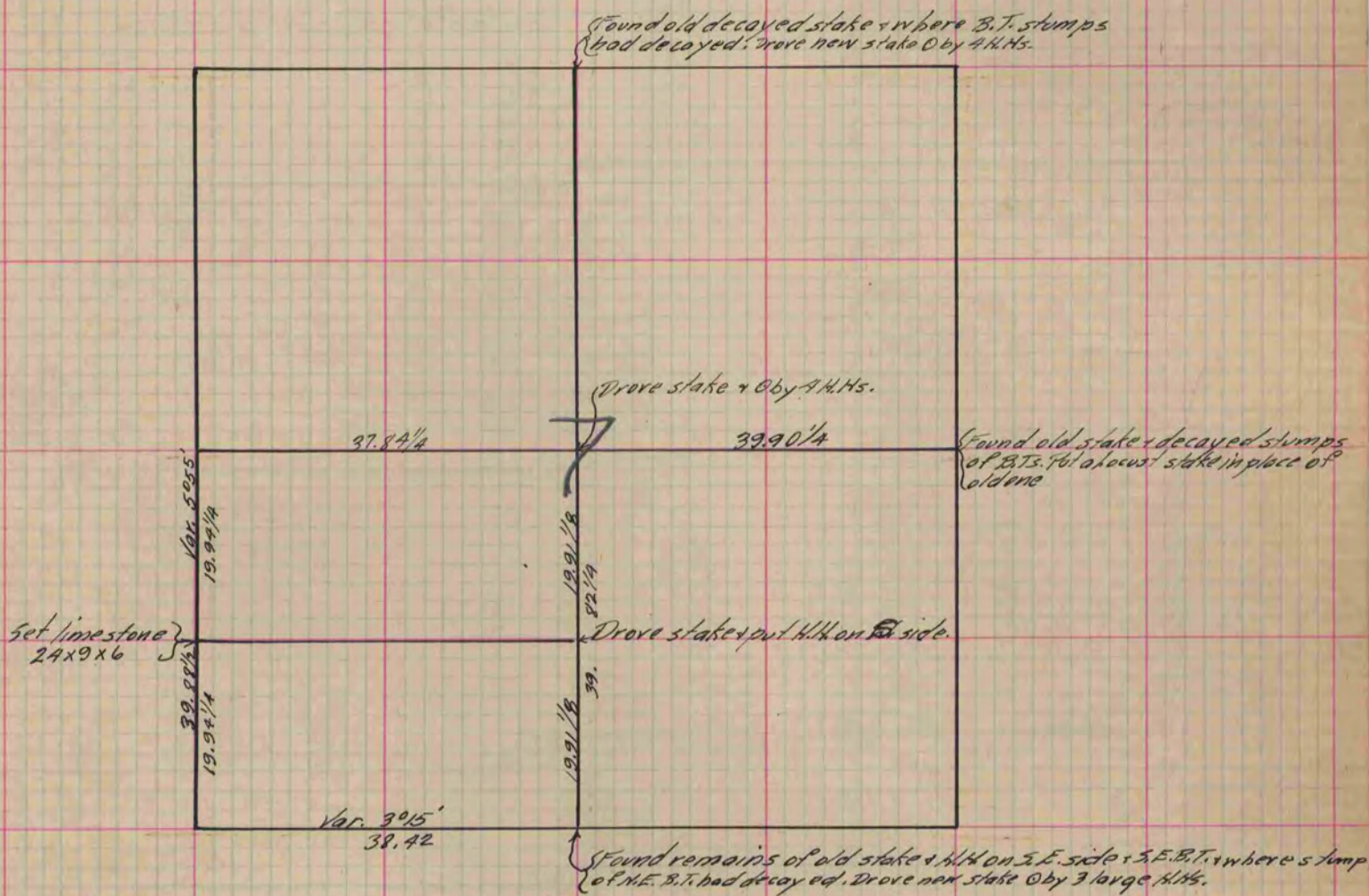
Rock County, Wisconsin, made May the 3 1883

I hereby certify that the following is a correct record of said survey as made by me.

COUNTY BUILDING
IN CITY OF BELOIT

(Signed) Edward Reger
ER

County Surveyor.



Copied from P. 331 Vol 2 County Surveyor's Record.