

PLAT AND RECORD

Of a Survey on Section 19 T 1 R 13 E. of the 4 P. M. in Turtle Township

Rock County, Wisconsin, made Oct. the 8 1887

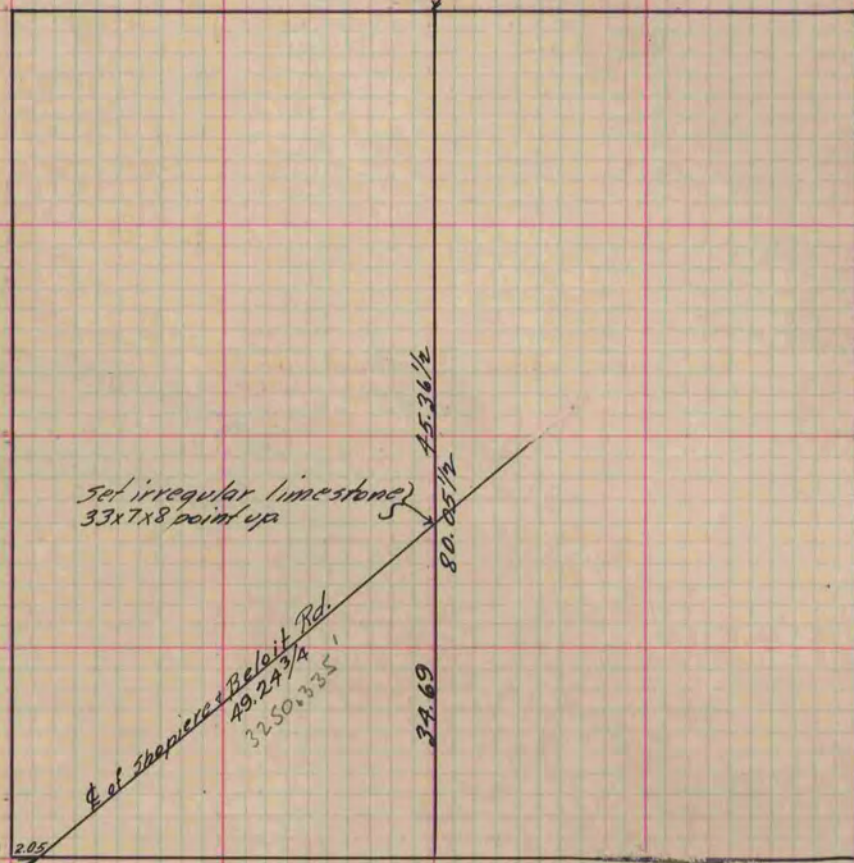
I hereby certify that the following is a correct record of said survey as made by me.

COUNTY BUILDING
IN CITY OF BELOIT

(Signed) Edward Ruger
E. M. S.

County Surveyor.

Found N.E. B.T. where stump of S.E. B.T. had been dug up. Also old fence post hole. Set limestone 27x8x4 by 4 limestones.



(See Bk. 1 P. 114
County Surveyor's Record.)

Copied from P. 335 Vol. 1 County Surveyor's Record.