

PLAT AND RECORD

Of a Survey on ^{N.E. 1/4} Section 3 T 3 R 12 E. of the 4 P. M. in Jonesville Township

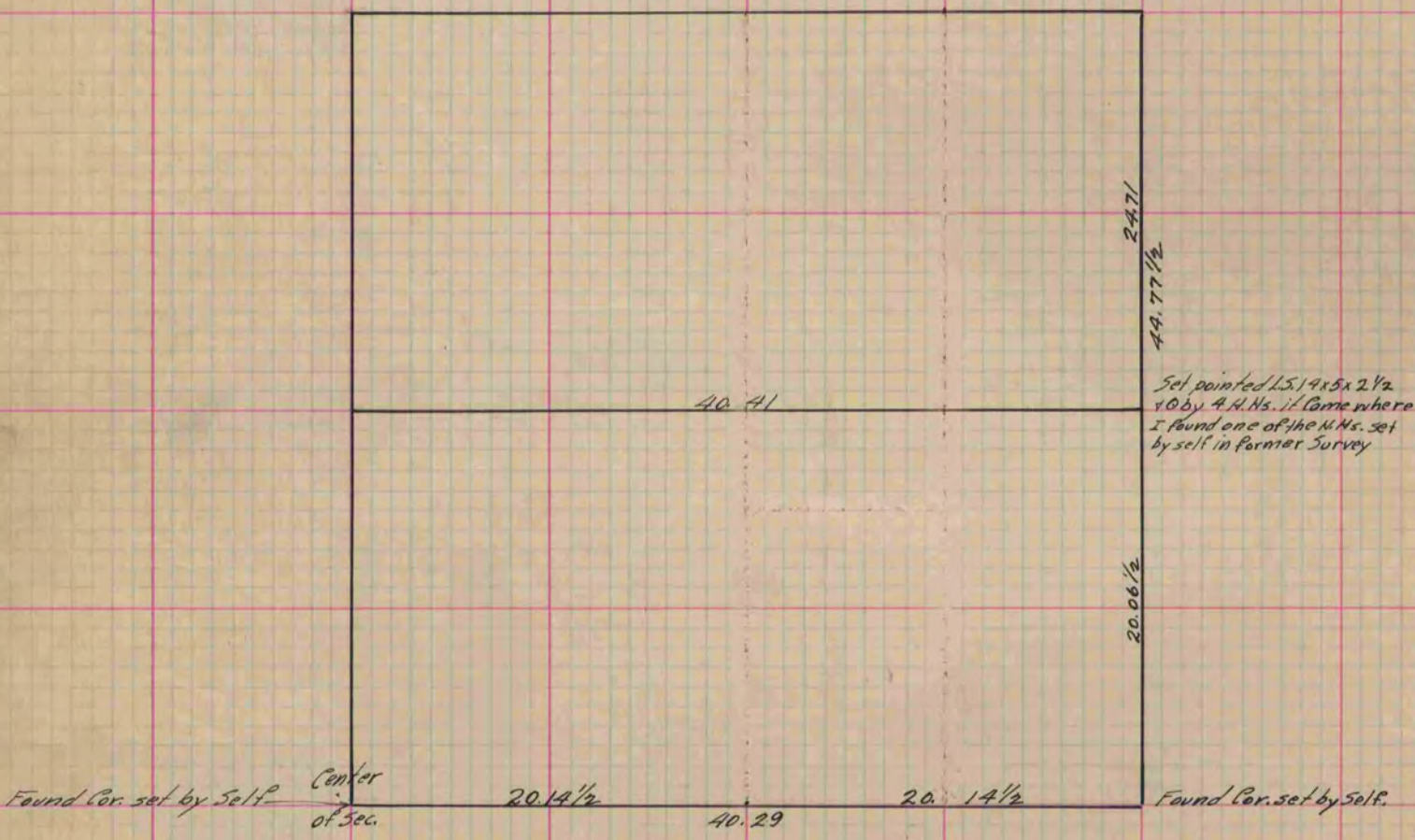
Rock County, Wisconsin, made Dec. the 11/12 1886

I hereby certify that the following is a correct record of said survey as made by me.

COUNTY BUILDING
IN CITY OF BELOIT

(Signed) Edward Ruger
E. R. A. B.

County Surveyor.



(See P. 194)

Copied from P. 337 Vol. 2 County Surveyor's Record.