

PLAT AND RECORD

419

Of a Survey on Section 12 T 2 R 10 E. of the 4 P. M. in Spring Valley Township

Rock County, Wisconsin, made May the 24 1887

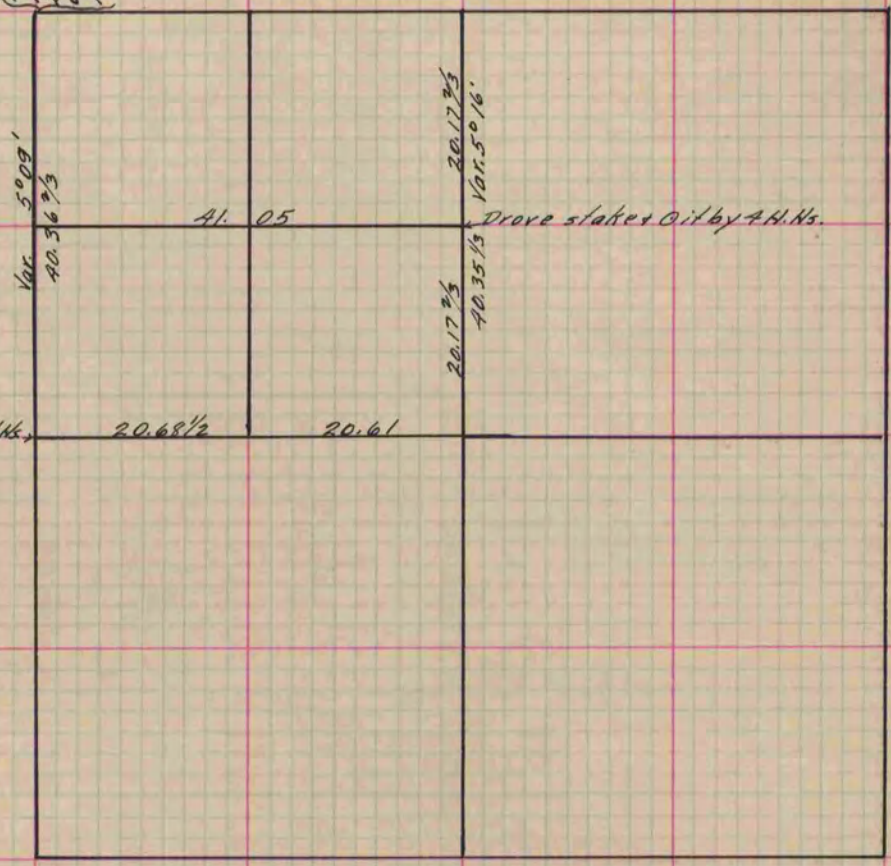
I hereby certify that the following is a correct record of said survey as made by me.

(Signed) Edward Ruger

County Surveyor.

COUNTY BUILDING
IN CITY OF BELOIT

Found old stake set by Locke also large
N.H. by it. It agreed with old st. stump
Left bottom of old stake in ground set
over limestone 17 1/2 x 11 1/2 x 11 by A. H. Ns.



Found stake @ by S.H.H.

(See Book I P. 246
County Surveyor's Record)