

# PLAT AND RECORD

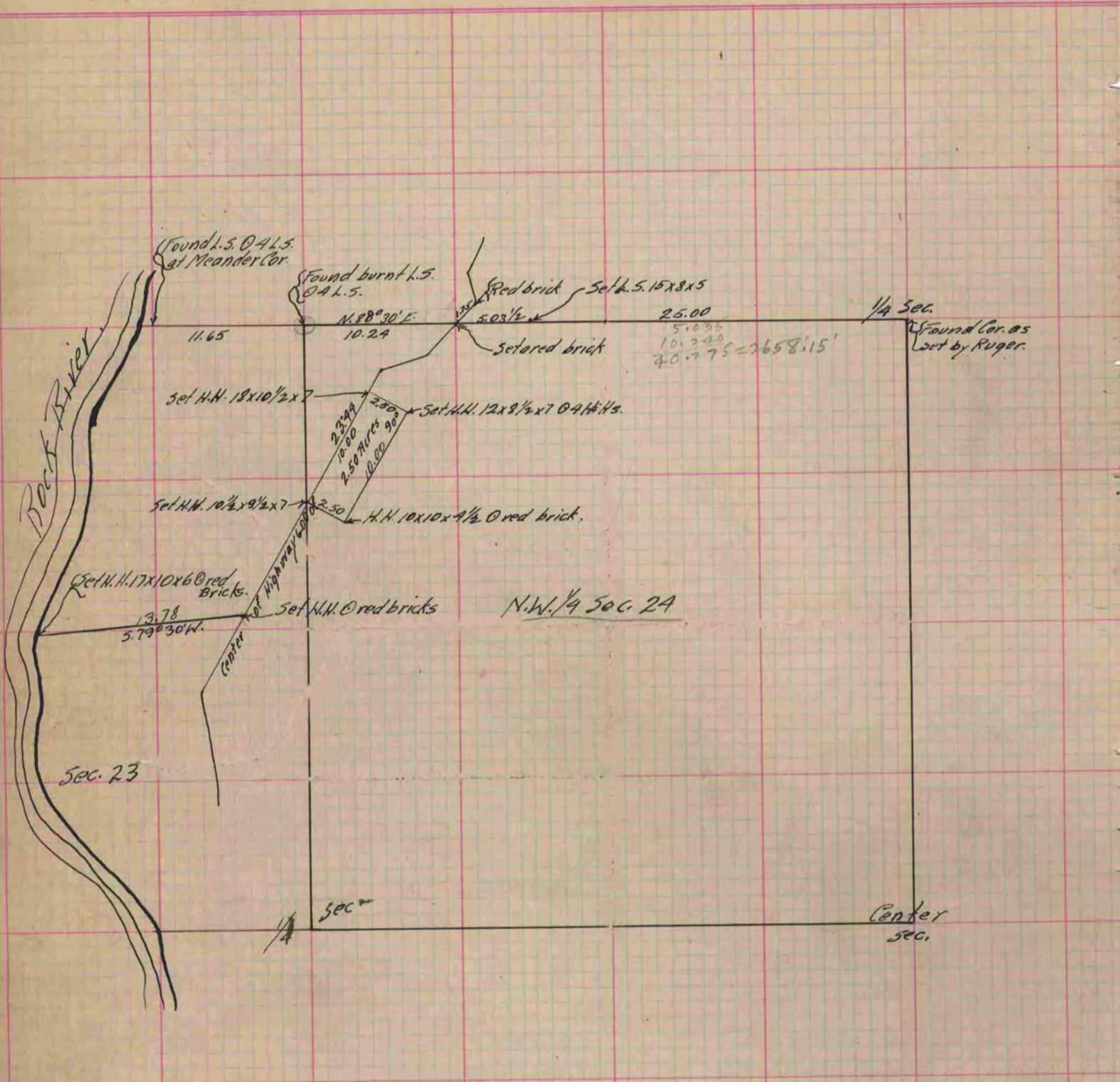
Of a Survey on Section 23+24 T 3 R 12 E. of the 4 P. M. in Jamesville Township

Rock County, Wisconsin, made Dec. 24 - 1891 & Oct. the 10 1892

I hereby certify that the following is a correct record of said survey as made by me.

COUNTY BUILDING  
IN CITY OF BELOIT

(Signed) O.G. Bleedorn  
O.G.B. Dep. County Surveyor.



Copied from P. 364 Vol. 2 County Surveyor's Record.