

PLAT AND RECORD

Of a Survey on Section 16 T 4 R 13 E. of the 4 P. M. in Milton Township

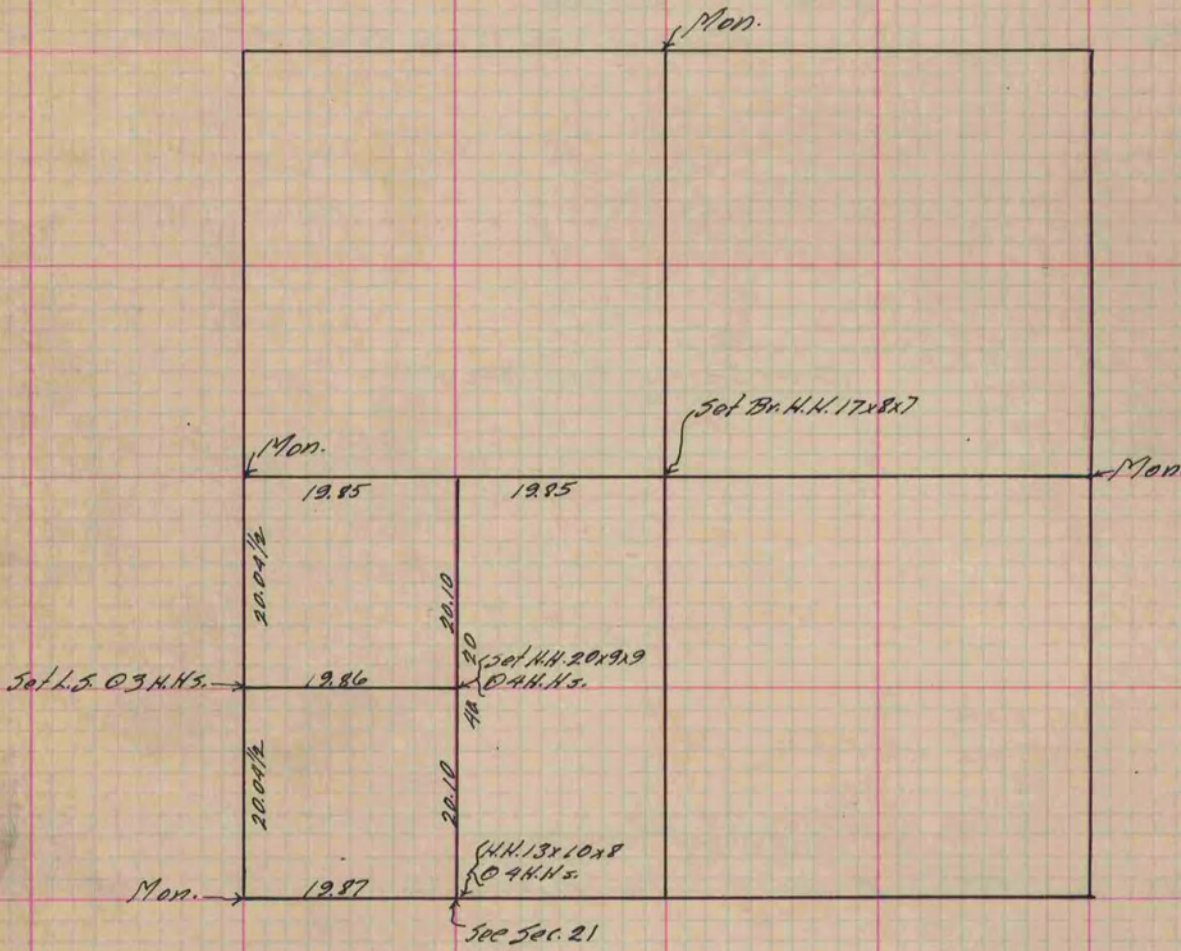
Rock County, Wisconsin, made June the 21 1892

I hereby certify that the following is a correct record of said survey as made by me.

COUNTY BUILDING
IN CITY OF BELOIT

(Signed) O. G. Bleedorn
O. G. B.

County Surveyor.



Copied from P. 368 Vol. 2 County Surveyor's Record.