

PLAT AND RECORD

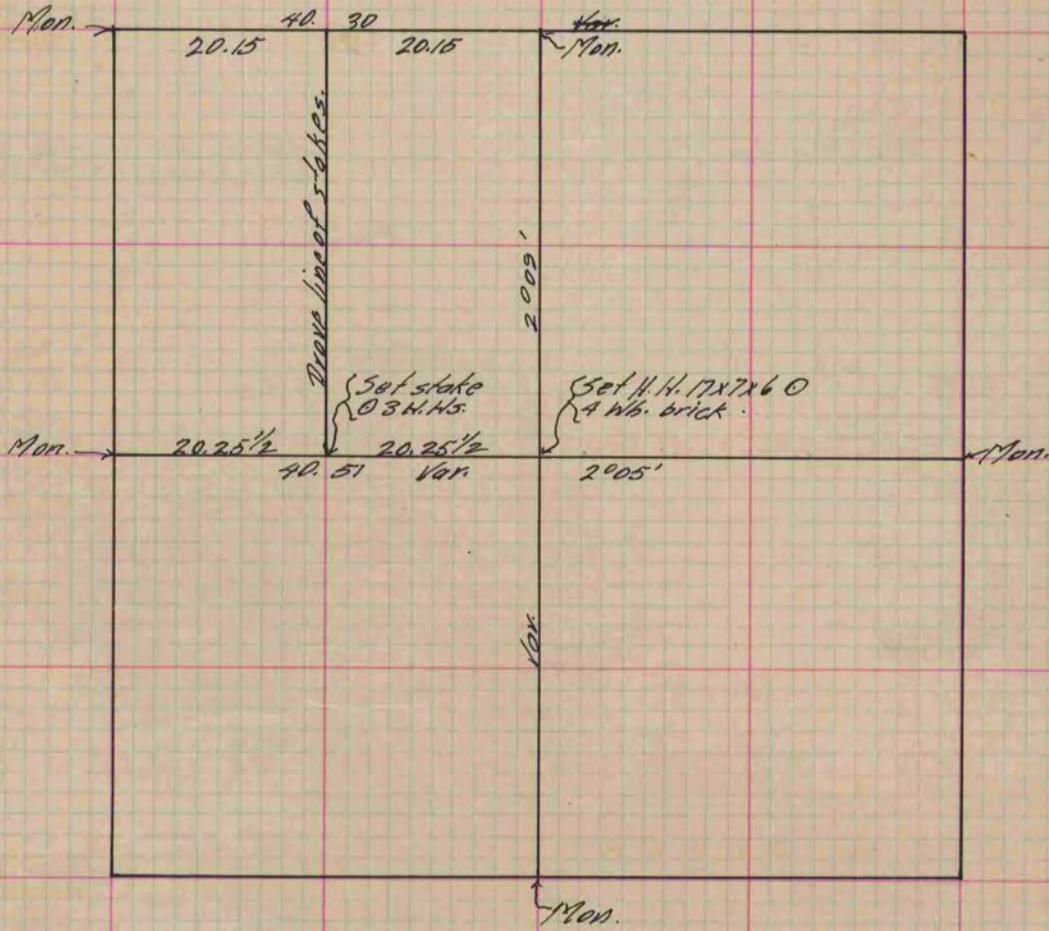
Of a Survey on Section 11 T 4 R 13 E. of the 4 P. M. in Milton Township
Rock County, Wisconsin, made Oct. the 13 1892

I hereby certify that the following is a correct record of said survey as made by me.

COUNTY BUILDING
IN CITY OF BELOIT

(Signed) O.G. Bleedorn
O.G.

County Surveyor.



Copied from P. 369 Vol. 2 County Surveyor's Record.