

PLAT AND RECORD

3435 T. 3 N. R. 11 E. Center
Of a Survey on Section 243 T. 2 N. R. 11 E. of the 4 P. M. in Plymouth Township
Rock County, Wisconsin, made May, Aug., Oct. the 1933.

I hereby certify that the following is a correct record of said survey as made by me.

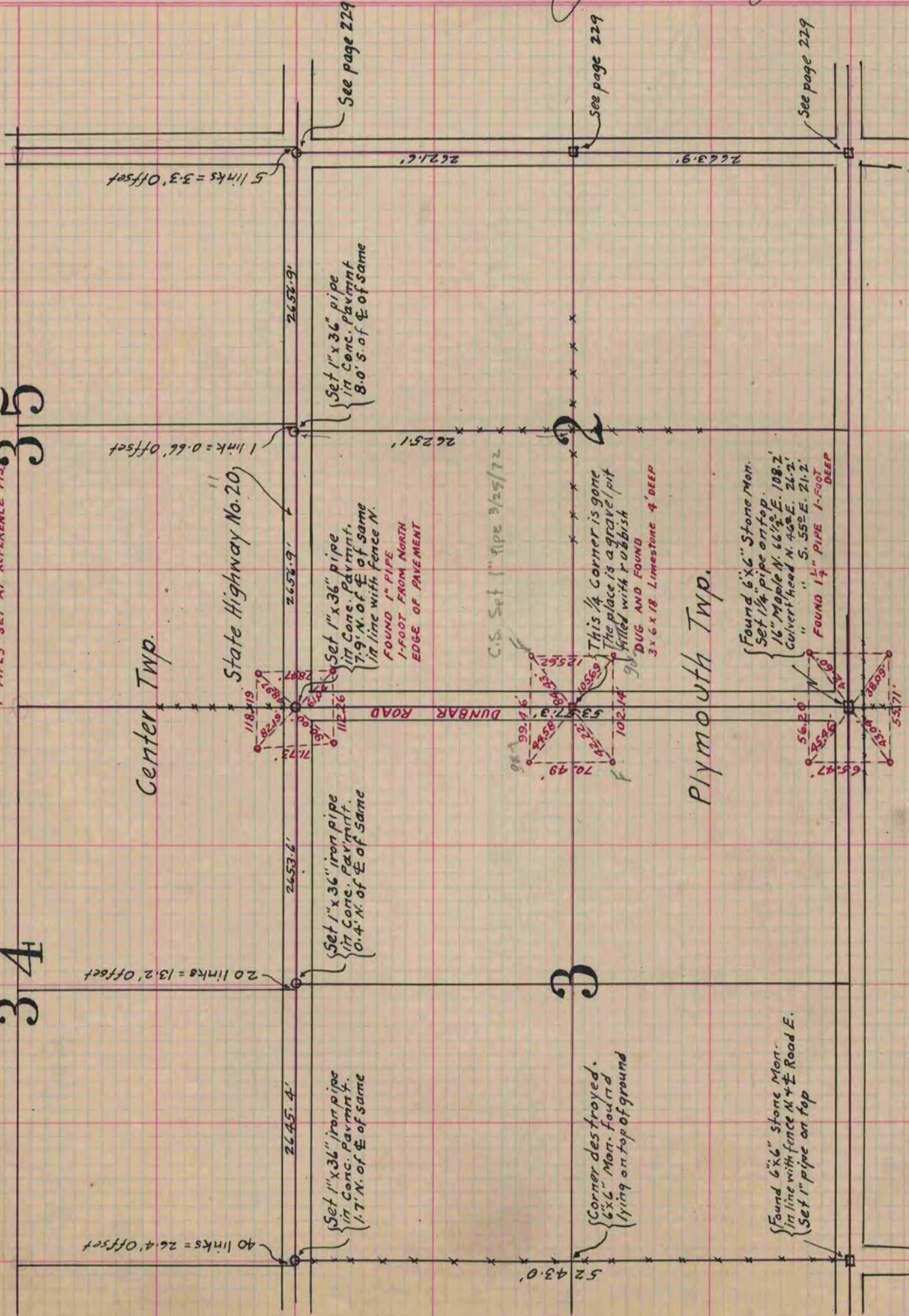
COUNTY BUILDING
IN CITY OF БЕЛОIT

B. J. Bunny
County Surveyor.

WORK SHOWN IN RED
DONE BY R. H. BATTERMAN JR.
April 21, 1958

35

34



Center Twp.

Plymouth Twp.

State Highway No. 20

DUNBAR ROAD

40 links = 26.4' Offset

20 links = 13.2' Offset

1 link = 0.66' Offset

5 links = 3.3' Offset

Set 1" x 36" iron pipe
in Conc. Pavim't.
1.7' N. of E. of same

Set 1" x 36" iron pipe
in Conc. Pavim't.
0.4' N. of E. of same

Set 1" x 36" pipe
in Conc. Pavim't.
7.9' N. of E. of same
in line with fence N.
FOUND 1" PIPE
1-FOOT FROM NORTH
EDGE OF PAVEMENT

Set 1" x 36" pipe
in Conc. Pavim't.
8.0' S. of E. of same

Corner destroyed.
6" x 6" Mon. found
lying on top of ground

Found 6" x 6" Stone Mon.
in line with fence N + E Road E.
Set 1" pipe on top

Found 6" x 6" Stone Mon.
Set 1 1/4" pipe on top.
16" Maple N. 66 1/2° E. 108.2'
Culvert head N. 40° E. 26.2'
" S. 55° E. 21.2'
FOUND 1 1/4" PIPE 1-FOOT
DEEP

This 1/4 corner is gone
The place is a gravel pit
filled with rubbish
DUG AND FOUND
3 x 6 x 18 Limestone 4' DEEP

C.S. Set 1" pipe 3/25/72

See page 229

See page 229

See page 229

52 43.0'

26 45.4'

26 53.6'

26 56.9'

26 56.9'

26 25.1'

26 21.6'

26 63.9'

70.49'

53.73'

102.14'

99.46'

99.46'

125.62'

125.62'

112.26'

112.26'

118.419'

118.419'

118.419'

118.419'

118.419'

118.419'

118.419'

118.419'

118.419'

118.419'

118.419'

118.419'

118.419'

118.419'

118.419'

118.419'

118.419'

118.419'

118.419'