

PG 339 JANESVILLE
REC 12/15/75 DAB
S.W. 1/4 OF S.E. 1/4

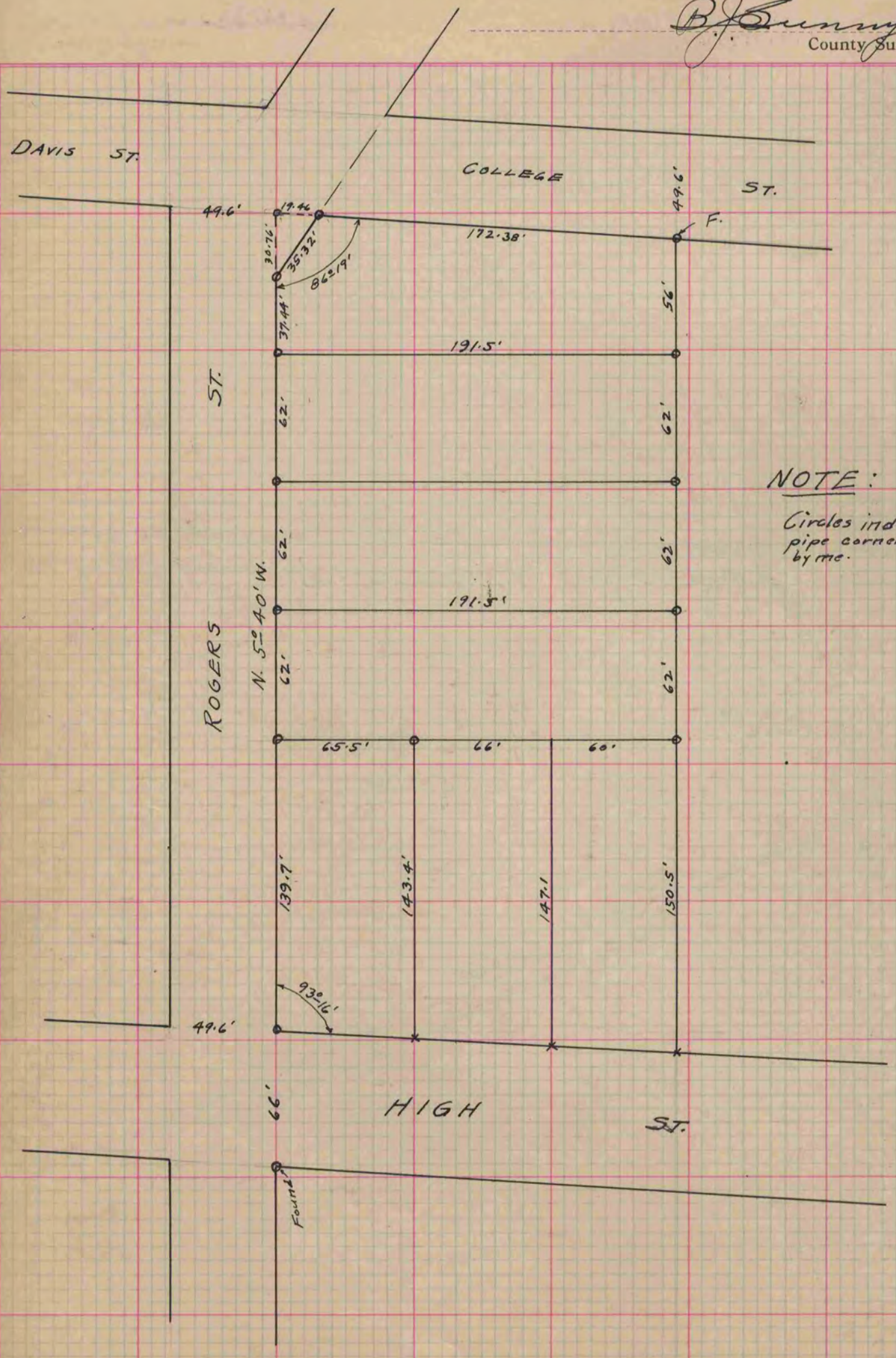
PLAT AND RECORD

COUNTY BUILDING
IN CITY OF БЕЛОIT

Of a Survey on Section 27 T 4 N. R 13 E. of the 4 P. M. in Milton Township
Rock County, Wisconsin, made August 30 1937
March 23 1938
Sept. 20 1938

I hereby certify that the following is a correct record of said survey as made by me.

B. J. Bunney
County Surveyor.



NOTE:
Circles indicate
pipe corners set
by me.