

# PLAT AND RECORD

385

PG 83 95 JAMESVILLE  
REC 12/16/75 DAB

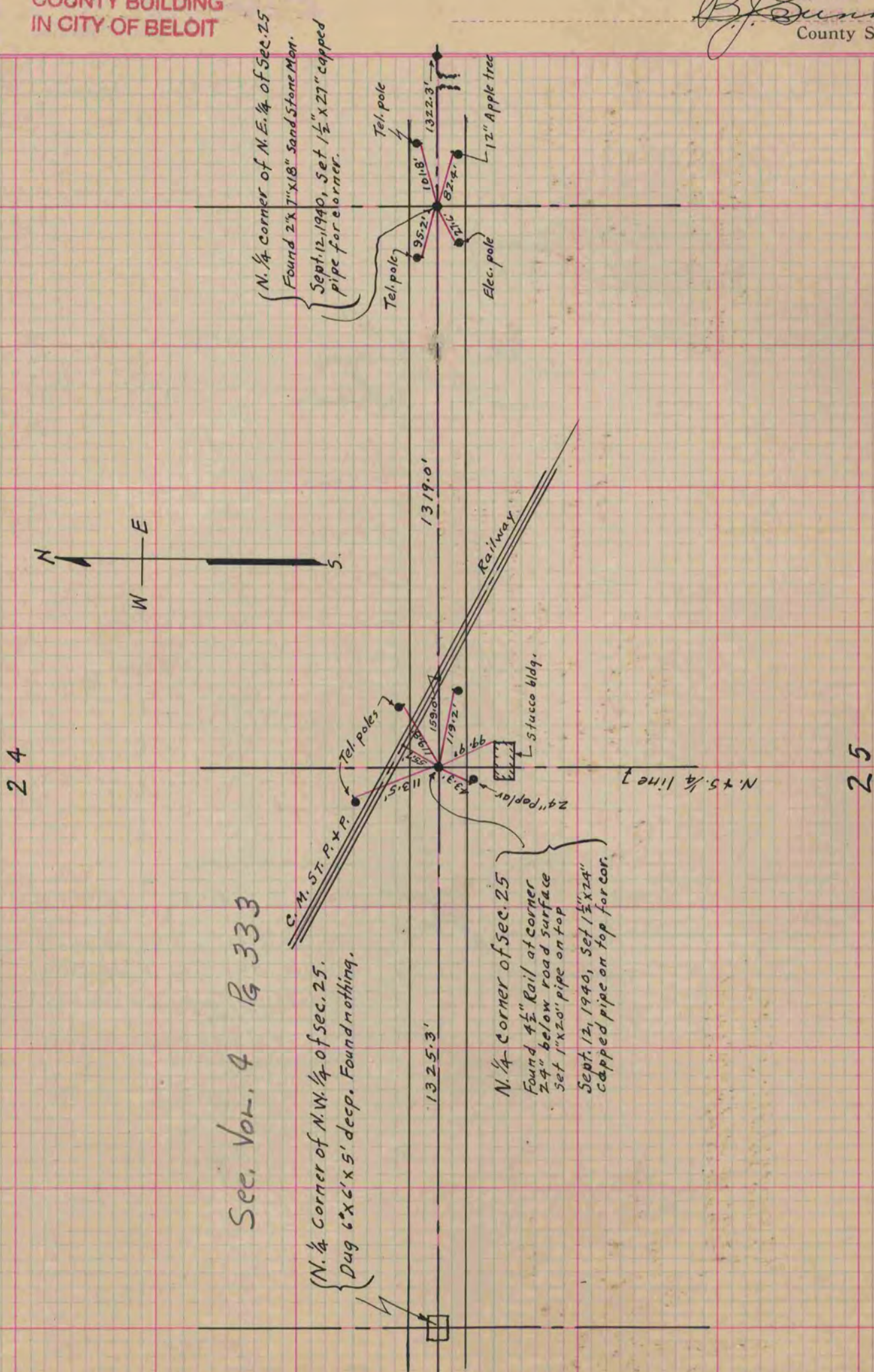
Of a Survey on Section 24 & 25 T 4 N., R 12 E. of the 4 P. M. in Fulton Township

Rock County, Wisconsin, made May the 18, 1938  
Sept. 12, 1940

I hereby certify that the following is a correct record of said survey as made by me.

COUNTY BUILDING  
IN CITY OF БЕЛОIT

*B. J. Bunny*  
County Surveyor.



Sec. Vol. 4 Pg 333

(N. 1/4 corner of N.W. 1/4 of sec. 25.  
Dug 6' x 6' x 5' deep. Found nothing.

N. 1/4 corner of sec. 25  
Found 4 1/2" Rail at corner  
24" below road surface  
Set 1" x 20" pipe on top  
Sept. 12, 1940, Set 1 1/2" x 24"  
capped pipe on top for cor.

(N. 1/4 corner of N.E. 1/4 of Sec. 25  
Found 2" x 7" x 18" Sand Stone Mon.  
Sept. 12, 1940, Set 1 1/2" x 27" capped  
pipe for corner.