

PLAT AND RECORD

296
PG 396 JANESVILLE REC

12/16/75 DAB

23, 24

Of a Survey on Section 25+26 T2N., R 12 E. of the 4 P. M. in Rock Township

Rock County, Wisconsin, made June the 1938
4 November 1938

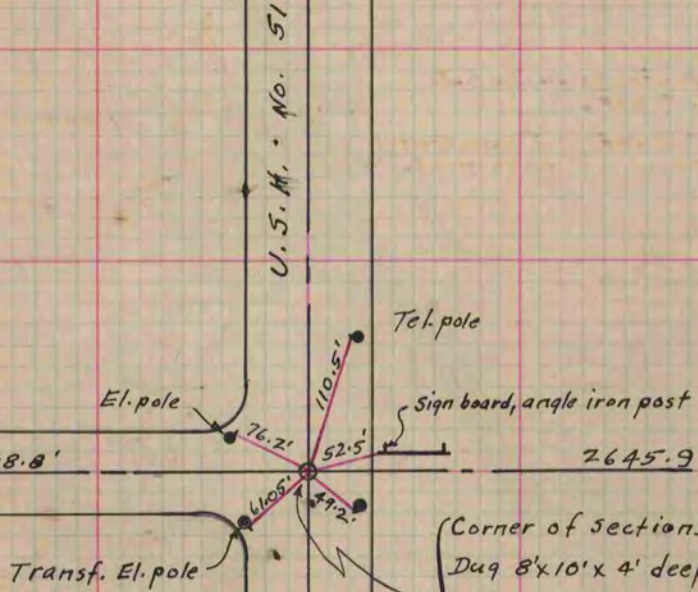
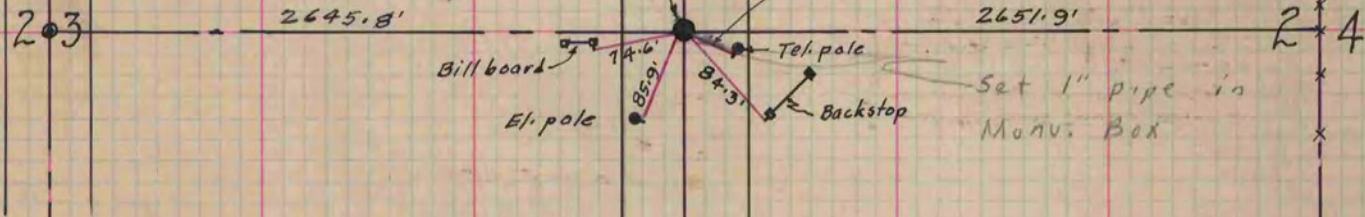
I hereby certify that the following is a correct record of said survey as made by me.

COUNTY BUILDING
IN CITY OF BELOIT

B. J. Sunny
County Surveyor.

Set Manu. Boxes
Sept. 1966
H.L.C.

E. & W. 1/4 Cor. of Sec. 23+24
Established corner from
proportionate measurements.
Set 2" round C.I. Mon. in new
concrete pavement



Corner of sections 23, 24, 25, +26
Dug 8'x10'x 4' deep. Found nothing.
Established corner by proportionate
measurements.
Set 2" round C.I. monument in
new conc. pavement

Dug large hole 10'x10'x7'
found Nothing
Set 1" Pipe in Manu. Box
in place of Sunny's pipe