

PLAT AND RECORD

PG 410 JANESVILLE REC

12/16/75 DAB

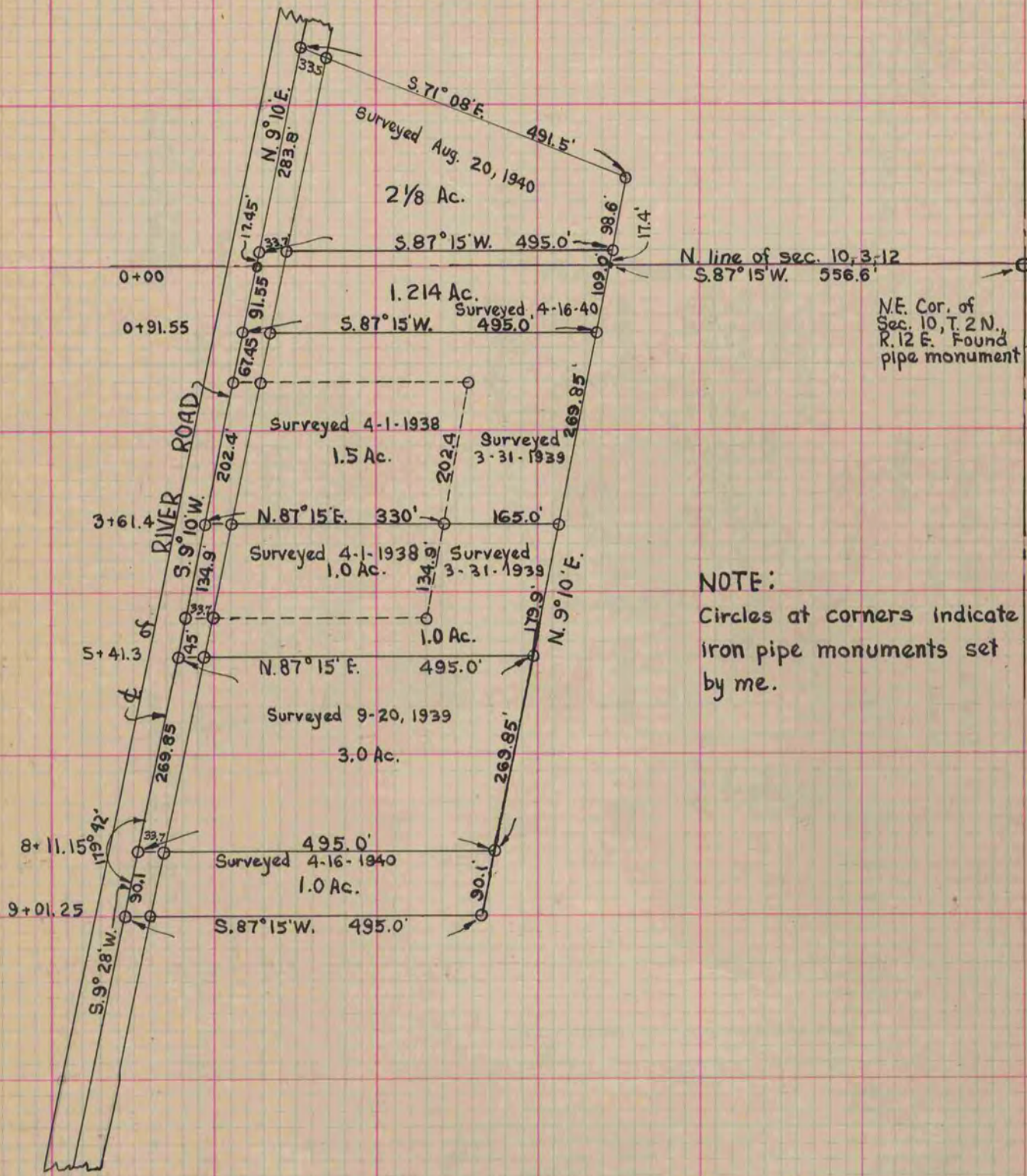
Of a Survey on Section 10 T 2 R 12 E. of the 4 P. M. in Rock Township

Rock County, Wisconsin, made ^{March} ~~April~~ ^{August} the ³¹ ~~16~~ ²⁰ 1939
1940
1940

I hereby certify that the following is a correct record of said survey as made by me.

COUNTY BUILDING
IN CITY OF BELOIT

(Signed) B. J. Sunny
County Surveyor.



NOTE:
Circles at corners indicate iron pipe monuments set by me.