

PLAT AND RECORD

Of a Survey on Sections 9, 10, 11 T 4 N. R 13 E. of the 4 P. M. in Milton Township

Rock County, Wisconsin, made in June to the Dec. 1939

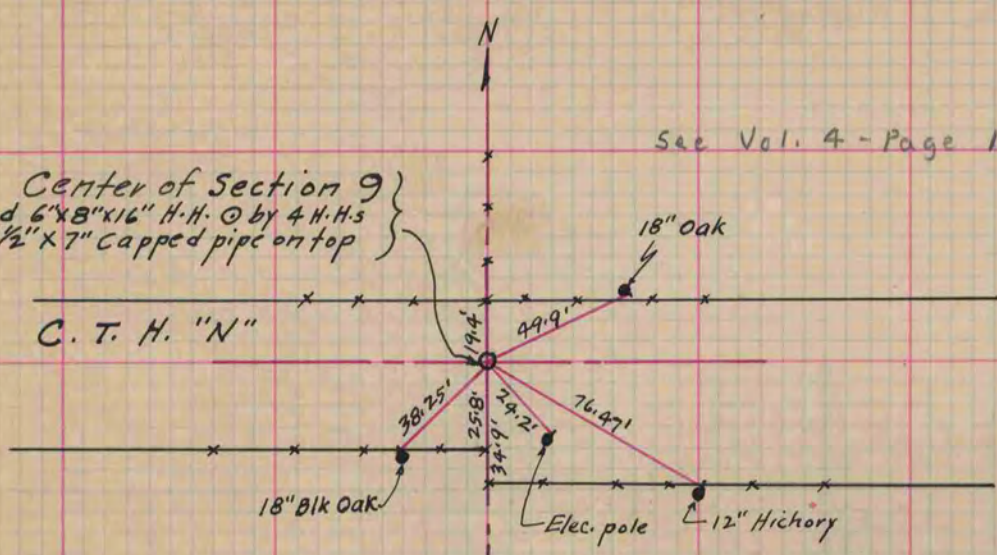
I hereby certify that the following is a correct record of said survey as made by me.

COUNTY BUILDING
IN CITY OF БЕЛОIT

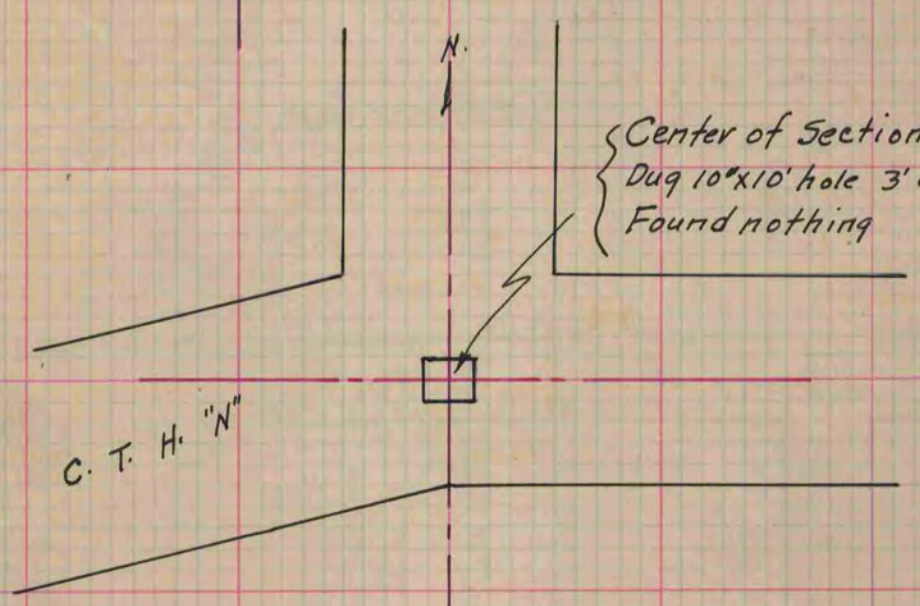
B. Bunny
County Surveyor.

See Vol. 4 - Page 103

Center of Section 9
Found 6"x8"x16" H.H. @ by 4 H.H.s
Set 1 1/2"x7" capped pipe on top



Center of Section 10
Dug 10"x10' hole 3' deep
Found nothing



E. 1/4 Corner of Sec. 10
Found 6"x6" stone mon.
Set 1 1/2"x 21" Capped pipe for corner on top

