

PLAT AND RECORD

455

PG 463 JANESVILLE
REC 12/16/75 REC

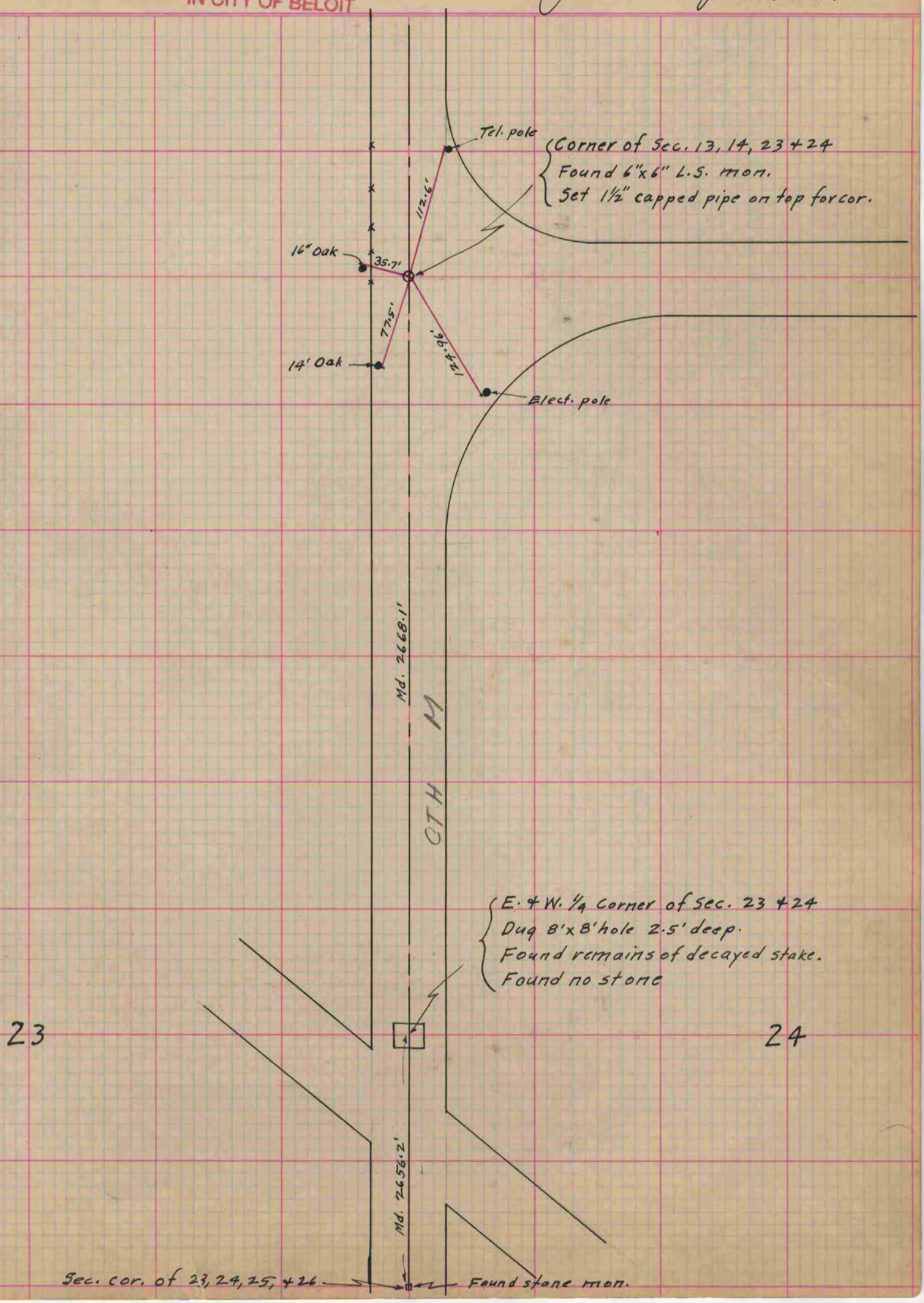
Of a Survey on Section ^{13, 14, 23} 24, 25, 26 T 4 N. R 10 E. of the 4 P. M. in Union Township

Rock County, Wisconsin, made July 17, 25 to the Dec. 23 1940

I hereby certify that the following is a correct record of said survey as made by me.

B. Bunny
County Surveyor.

COUNTY BUILDING
IN CITY OF БЕЛОIT



23

24

Sec. cor. of 23, 24, 25, + 26 Found stone mon.