

# PLAT AND RECORD

Of a Survey on Section 26 T 4 R 10 E. of the 4 P. M. in Union Township

Rock County, Wisconsin, made July the 13th 1962

I hereby certify that the following is a correct record of said survey as made by me.

**COUNTY BUILDING  
IN CITY OF BELOIT**

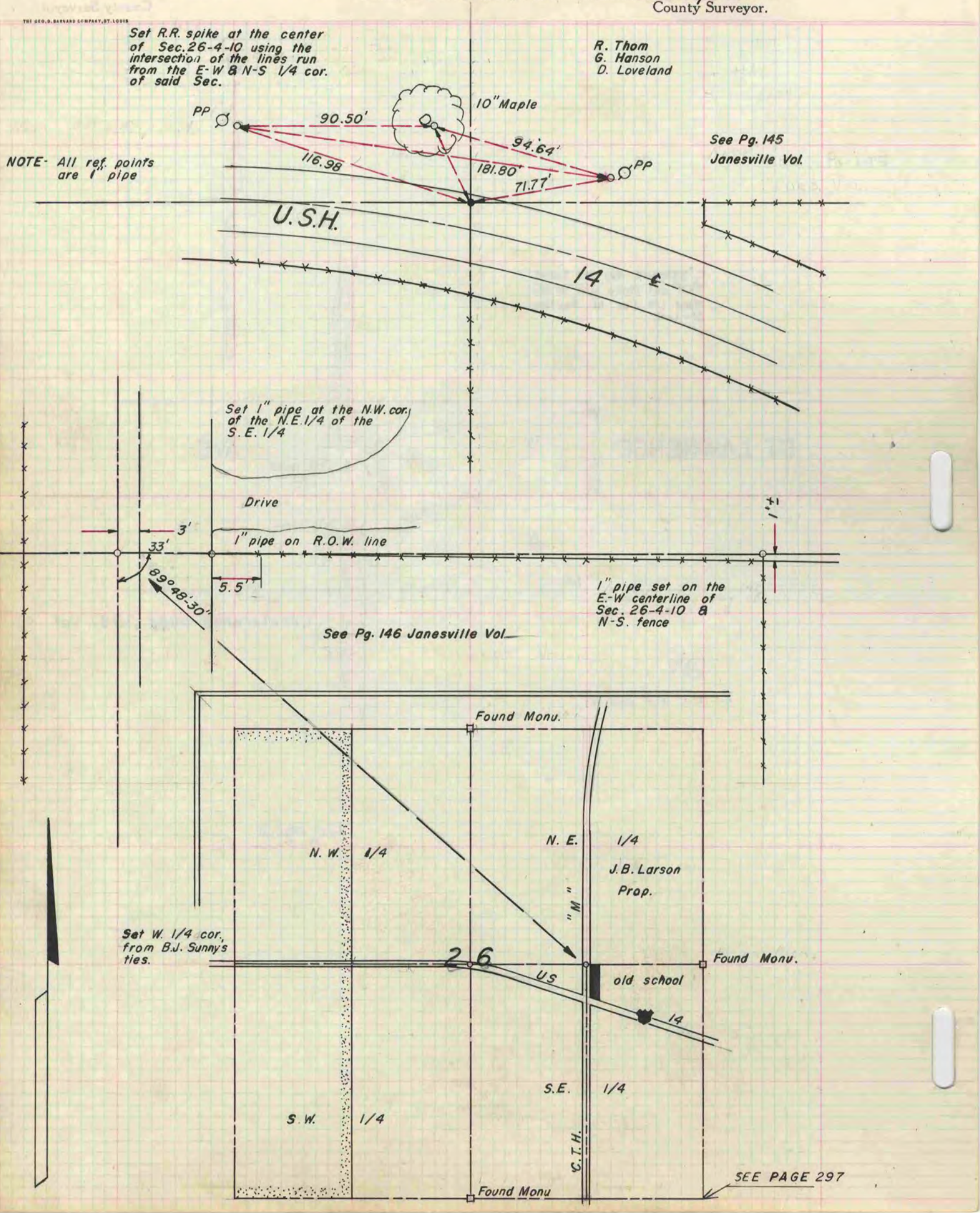
*Richard H. Bateman Jr.*  
County Surveyor.

R. Thom  
G. Hanson  
D. Loveland

Set R.R. spike at the center of Sec. 26-4-10 using the intersection of the lines run from the E-W & N-S 1/4 cor. of said Sec.

NOTE- All ref. points are 1" pipe

See Pg. 145  
Janesville Vol.



Set 1" pipe at the N.W. cor. of the N.E. 1/4 of the S.E. 1/4

Drive  
1" pipe on R.O.W. line

1" pipe set on the E-W centerline of Sec. 26-4-10 & N-S fence

See Pg. 146 Janesville Vol.

Set W. 1/4 cor. from B.J. Sunnys ties.

N. E. 1/4  
J.B. Larson Prop.

S. W. 1/4

S. E. 1/4

SEE PAGE 297