

PLAT AND RECORD

Of a Survey on Section 15, 22 T 3N R 13 E. of the 4 P. M. in HARMONY Township

Rock County, Wisconsin, made NOV. the 16 1963

I hereby certify that the following is a correct record of said survey as made by me.

COUNTY BUILDING
IN CITY OF BELLOIT

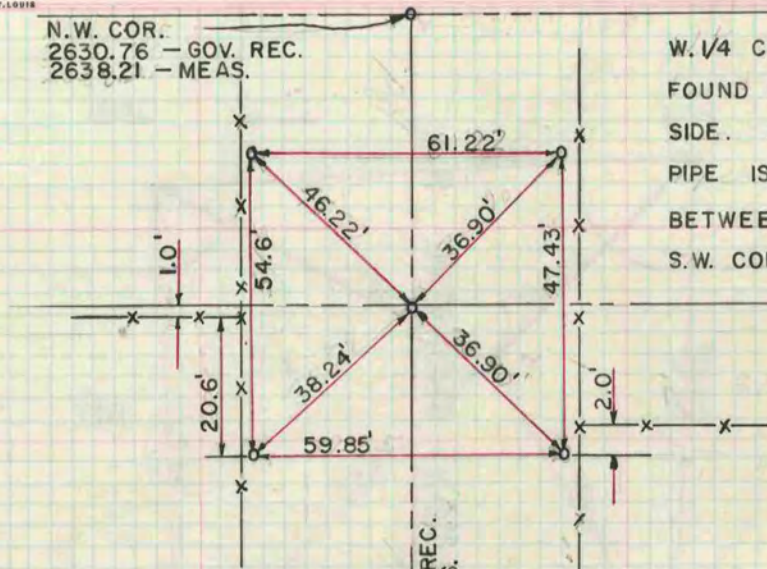
R. H. B. Jr. *R. H. B. Jr.*
County Surveyor.

THE GEO. D. BARNARD COMPANY, ST. LOUIS

N.W. COR.
2630.76 - GOV. REC.
2638.21 - MEAS.

W. 1/4 COR. SEC. 15-3-13

FOUND BROKEN STONE LAYING ON ITS
SIDE. SET 1" PIPE.
PIPE IS ONE FOOT EAST OF A LINE
BETWEEN THE N.W. COR. AND THE
S.W. COR. OF SEC. 15-3-13



H. COMBS
T. KERWIN
NOV. 16, 1963

NOV. 22, 1963

The PRESIDENT DIED At The Hand Of Lee Oswald.

Sketched The Day Of PRESIDENT KENNEDY'S ASSASSINATION.

TOWNHALL ROAD

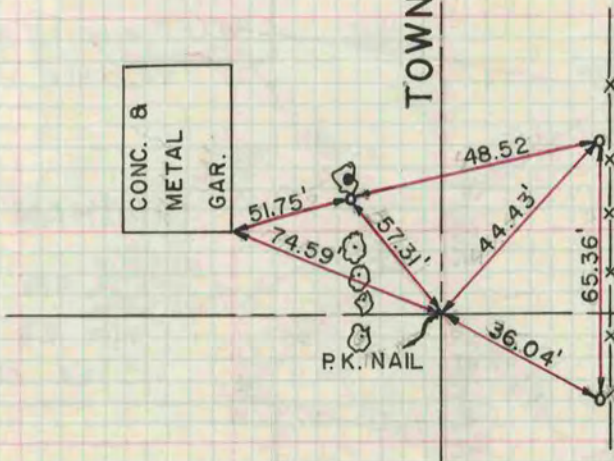
2632.74 - GOV. REC.
2640.20 - MEAS.

S.W. COR. SEC. 15-3-13
SET 1" PIPE

CONC. &
METAL
GAR.

W. 1/4 COR. SEC. 22-3-13

R.L. THOM LOCATED THE CUT
STONE AND PLACED A P.K. NAIL
OVER IT.
REFERENCED WITH 1" PIPES.



TREES
SET 1" PIPES

H. COMBS
T. KERWIN
NOV. 15, 1963