

PLAT AND RECORD

Of a Survey on Section 16 T 3 R 10 E. of the 4 P. M. in MAGNOLIA Township

Rock County, Wisconsin, made SEPTEMBER the 23 1964

I hereby certify that the following is a correct record of said survey as made by me.

**COUNTY BUILDING
IN CITY OF БЕЛОIT**

R. B. Atkinson
County Surveyor.

THE GEO. D. BARBARO COMPANY, ST. LOUIS

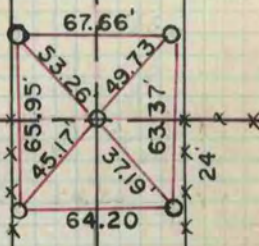


DUG LARGE HOLE
FOUND NOTHING
AT SE. CORNER
9-23-64
H. LEE
T. KERWIN

ROAD

FOUND STAKE O BY
5 SANDSTONES
AT E. 1/4 CORNER
9-23-64
H. LEE
T. KERWIN

SET 1" PIPES AT
CORNER AND
REFERENCE
POINTS-11-4-64
H. COMBS
G. HANSON



16

MARTIN ROAD

KNUTSON

DUG LARGE HOLE
15 X 5 X 4
FOUND NOTHING
9-23-64
H. LEE
T. KERWIN

C.T.H "A"