

PLAT AND RECORD

Of a Survey on Section 22 T 1 N. R 13 E. of the 4 P. M. in TURTLE Township

Rock County, Wisconsin, made SEPTEMBER the 20th 1971

I hereby certify that the following is a correct record of said survey as made by me,

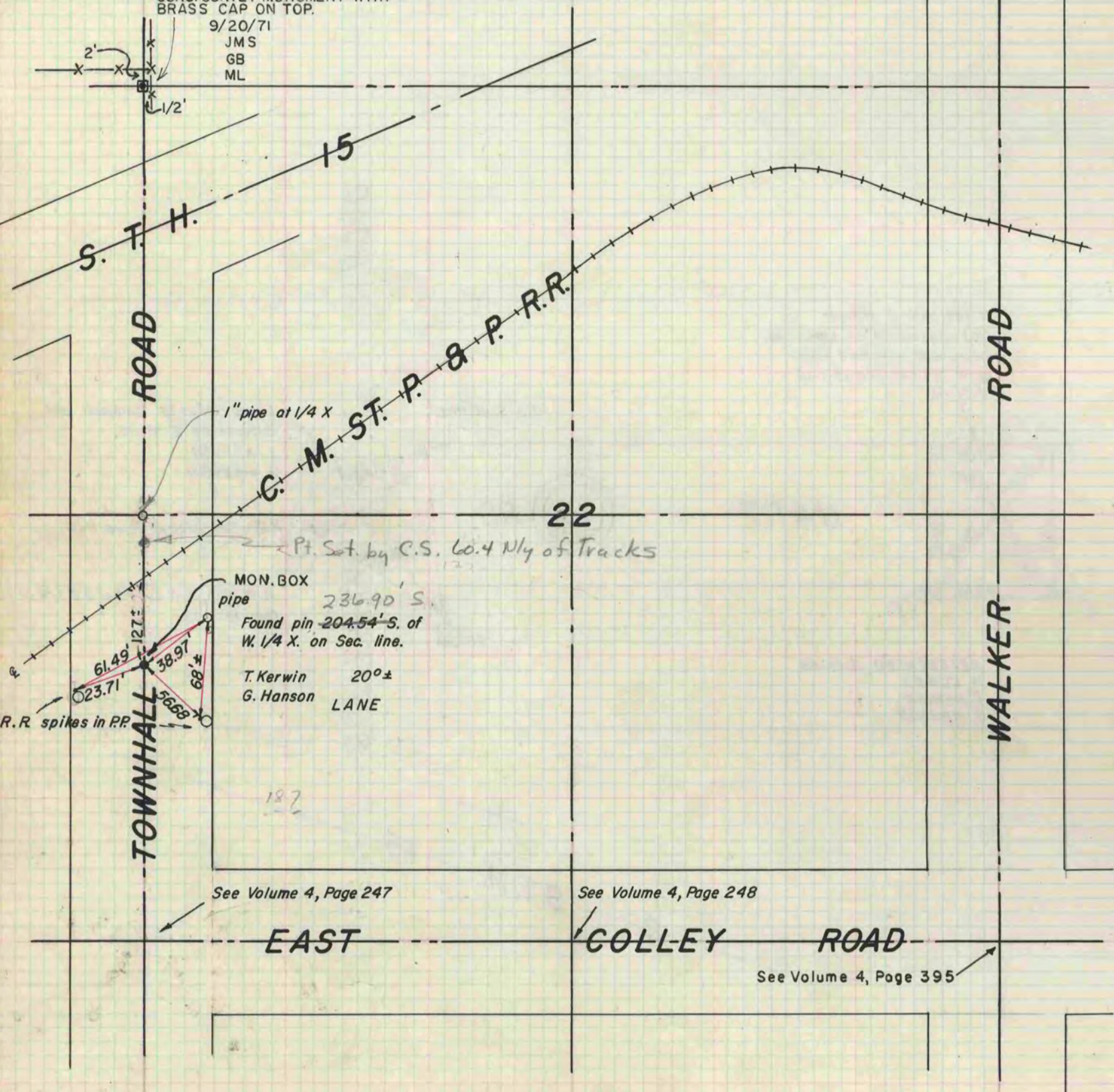
**COUNTY BUILDING
IN CITY OF БЕЛОIT**

Hugh J. Lee
County Surveyor.

THE GEO. D. BARNARD COMPANY, ST. LOUIS

AT N.W. COR. SEC. 22-1-13 TURTLE TWP.
DUG & FD. 5/8 x 24" I. PIN
REPLACED PIN WITH STANDARD
CONC. SURVEY MONUMENT WITH
BRASS CAP ON TOP.

9/20/71
JMS
GB
ML



See Volume 4, Page 247

See Volume 4, Page 248

See Volume 4, Page 395