

PLAT AND RECORD

Of a Survey on Section 35 T 3 R 10 E. of the 4 P. M. in MAGNOLIA Township

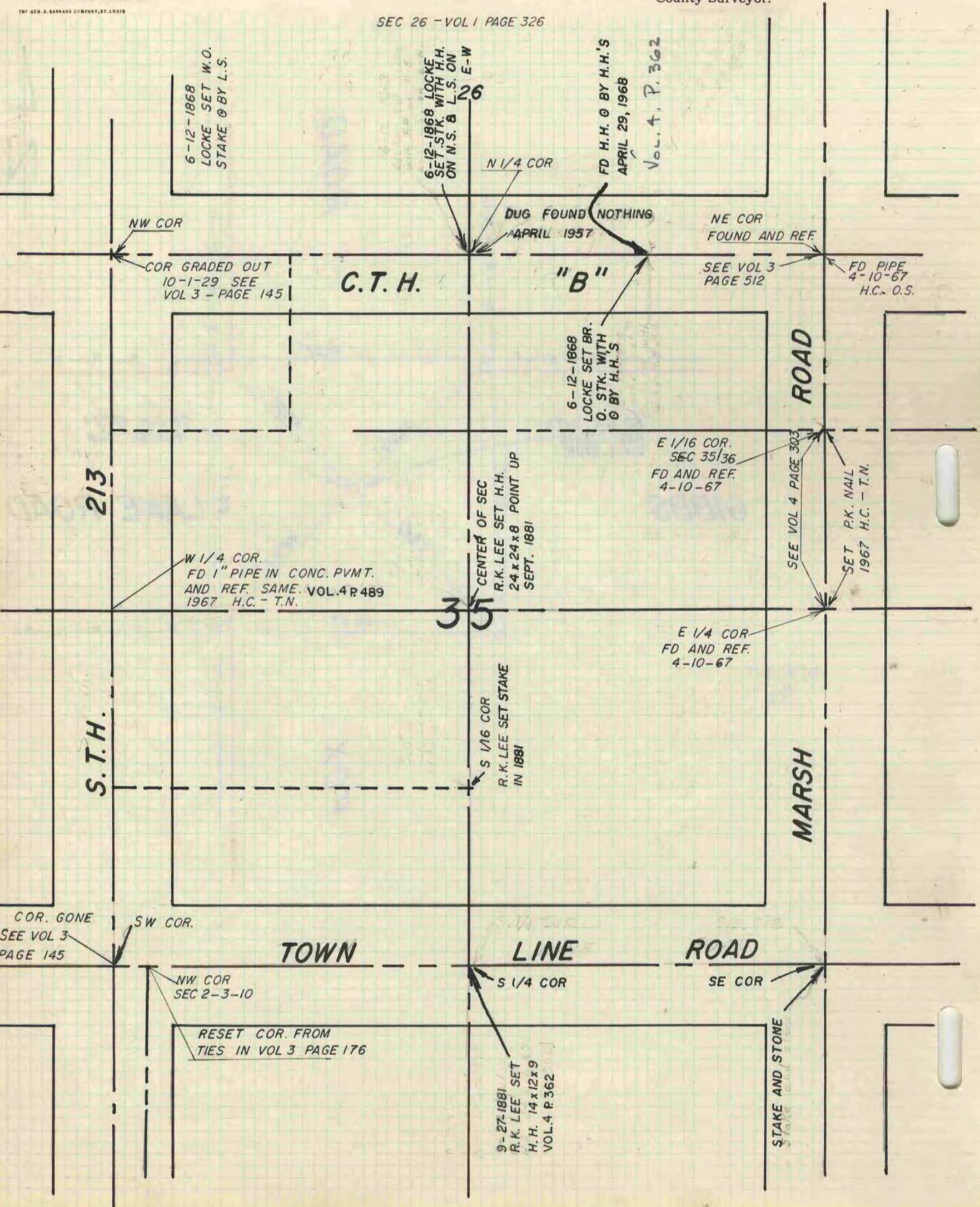
Rock County, Wisconsin, made NOVEMBER the 2 1967

I hereby certify that the following is a correct record of said survey as made by me.

COUNTY BUILDING
IN CITY OF BELOIT

R. B. Battena Jr.
County Surveyor.

SEC 26 - VOL 1 PAGE 326



6-12-1868
LOCKE SET W.O.
STAKE @ BY L.S.

6-12-1868 LOCKE
SET STK. WITH H.H.
ON N.S. & L.S. ON
E-W

FD H.H. @ BY H.H.'S
APRIL 29, 1968
Vol. 4, P. 362

NW COR

N 1/4 COR

DUG FOUND NOTHING
APRIL 1957

NE COR
FOUND AND REF

COR GRADED OUT
10-1-29 SEE
VOL 3 - PAGE 145

C.T.H.

"B"

SEE VOL 3
PAGE 512

FD PIPE
4-10-67
H.C. - O.S.

6-12-1868
LOCKE SET BR.
O. STK. WITH
@ BY H.H.S.

ROAD

213

W 1/4 COR.
FD 1" PIPE IN CONC. PVMT.
AND REF. SAME. VOL. 4 P 489
1967 H.C. - T.N.

CENTER OF SEC
R.K. LEE SET H.H.
24x24x8 POINT UP
SEPT. 1881

E 1/16 COR.
SEC 35/36
FD AND REF.
4-10-67

SEE VOL 4 PAGE 303

SET P.K. NAIL
1967 H.C. - T.N.

35

E 1/4 COR
FD AND REF.
4-10-67

S.T.H.

S 1/16 COR
R.K. LEE SET STAKE
IN 1881

MARSH

COR. GONE
SEE VOL 3
PAGE 145

SW COR.

TOWN

LINE

ROAD

NW COR
SEC 2-3-10

S 1/4 COR

SE COR

RESET COR. FROM
TIES IN VOL 3 PAGE 176

9-27-1881
R.K. LEE SET
H.H. 14x12x9
VOL. 4 P. 362

STAKE AND STONE