

PLAT AND RECORD

Of a Survey on Section 30 T 2N R 14 E. of the 4 P. M. in BRADFORD Township

Rock County, Wisconsin, made SEPTEMBER the 7 1967

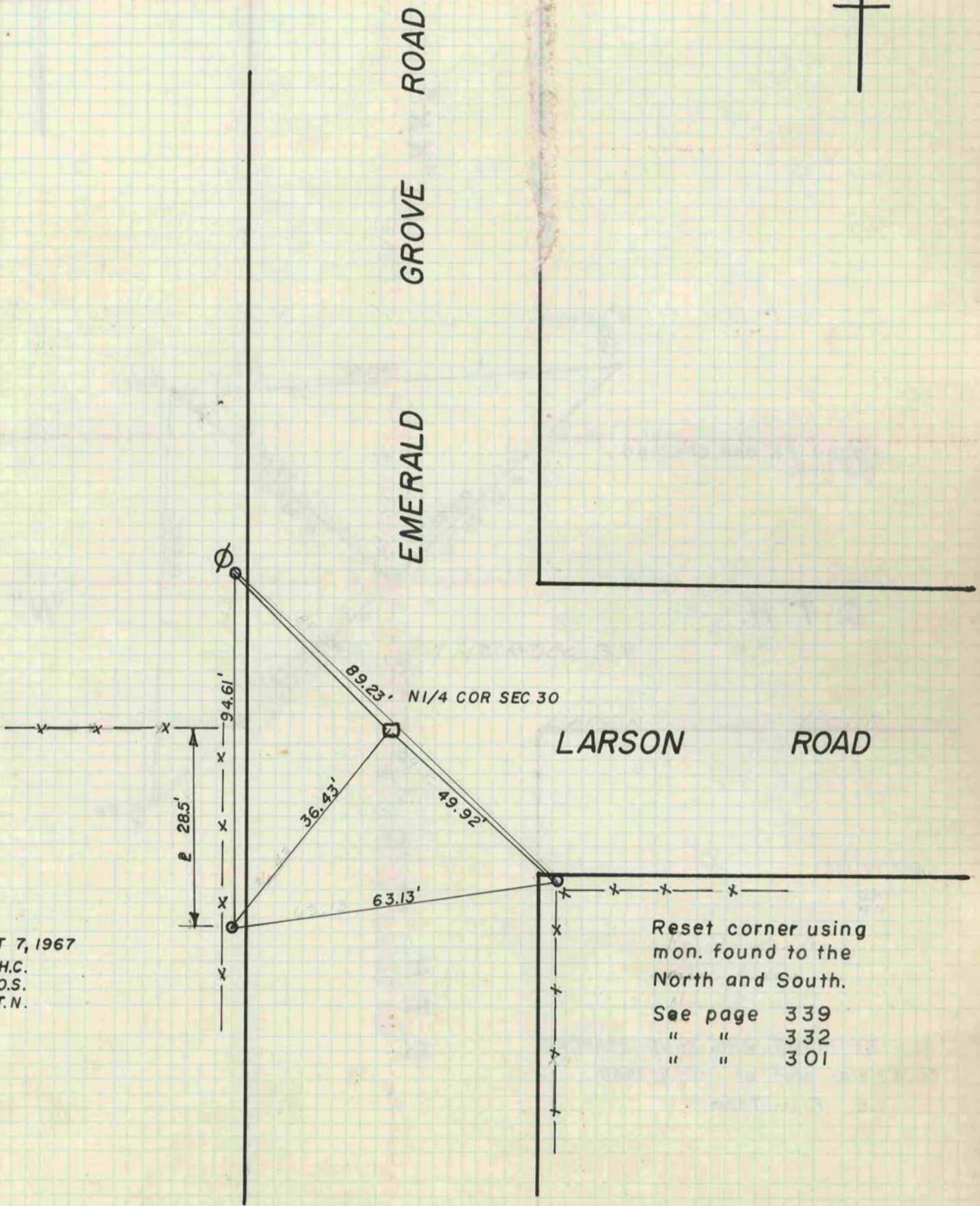
I hereby certify that the following is a correct record of said survey as made by me.

R. B. Batteman Jr.

County Surveyor.

THE GEO. D. BARNARD COMPANY, ST. LOUIS

COUNTY BUILDING
IN CITY OF БЕЛОIT



SEPT 7, 1967
H.C.
O.S.
T.N.

Reset corner using
mon. found to the
North and South.
See page 339
" " 332
" " 301