

PLAT AND RECORD

Of a Survey on Section 5 T 4N R 14 E. of the 4 P. M. in LIMA Township

Rock County, Wisconsin, made AUGUST the 15 1967

I hereby certify that the following is a correct record of said survey as made by me.

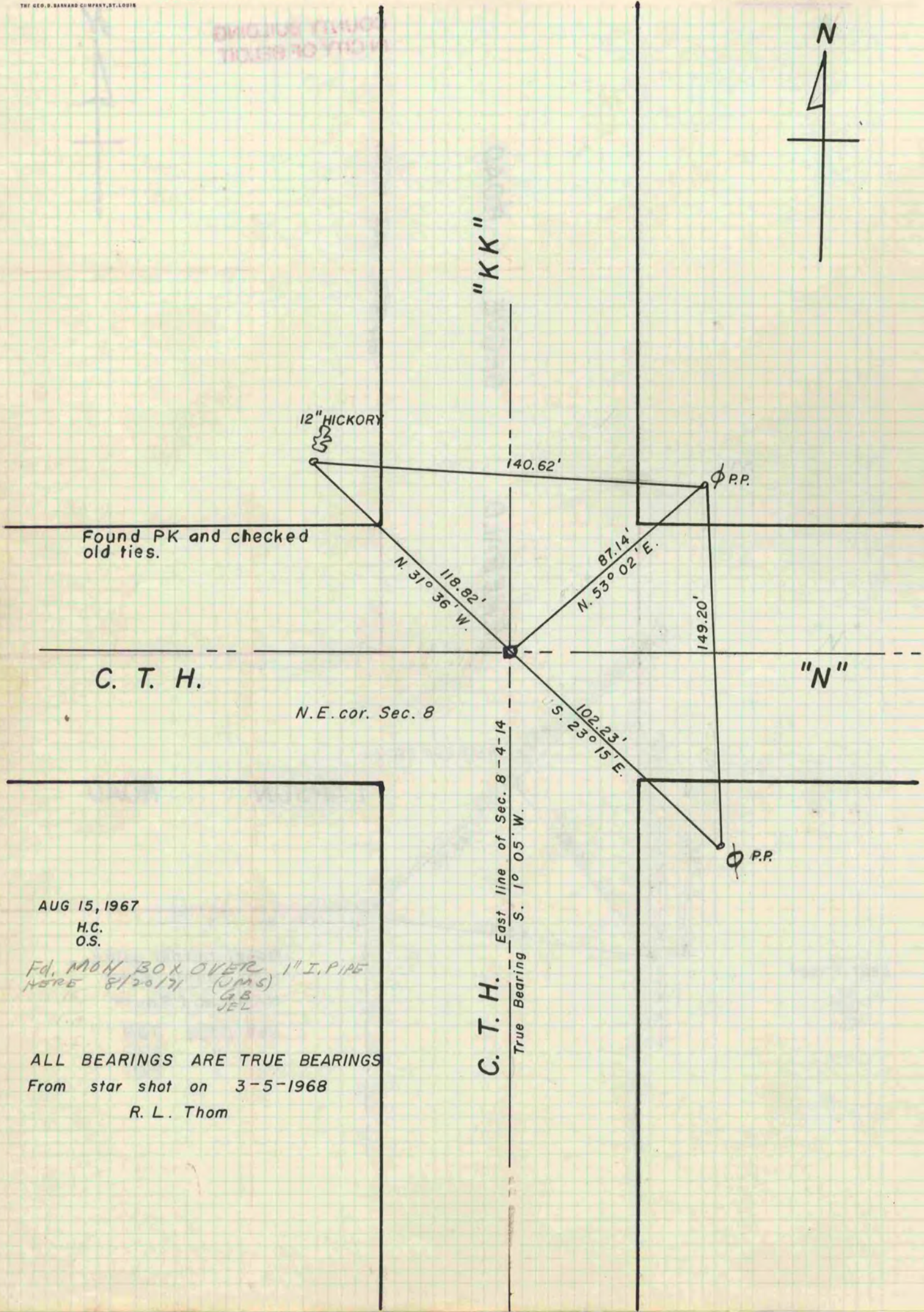
COUNTY BUILDING
IN CITY OF БЕЛОIT

R. B. Berman

County Surveyor.

THE GEO. B. BARBARO COMPANY, ST. LOUIS

DIVISION ENGINEER
COUNTY BUILDING
IN CITY OF БЕЛОIT



AUG 15, 1967

H.C.
O.S.

Fd. MON BOX OVER 1" I. PIPE
NOTE 8/20/71 (JMS)
G.B.
JEL

ALL BEARINGS ARE TRUE BEARINGS
From star shot on 3-5-1968

R. L. Thom

C. T. H.

East line of Sec. 8 - 4-14
True Bearing S. 1° 05' W.