

# PLAT AND RECORD

22-23

Of a Survey on Section 27-26 T. 3N R. 11 E. of the 4 P. M. in CENTER Township

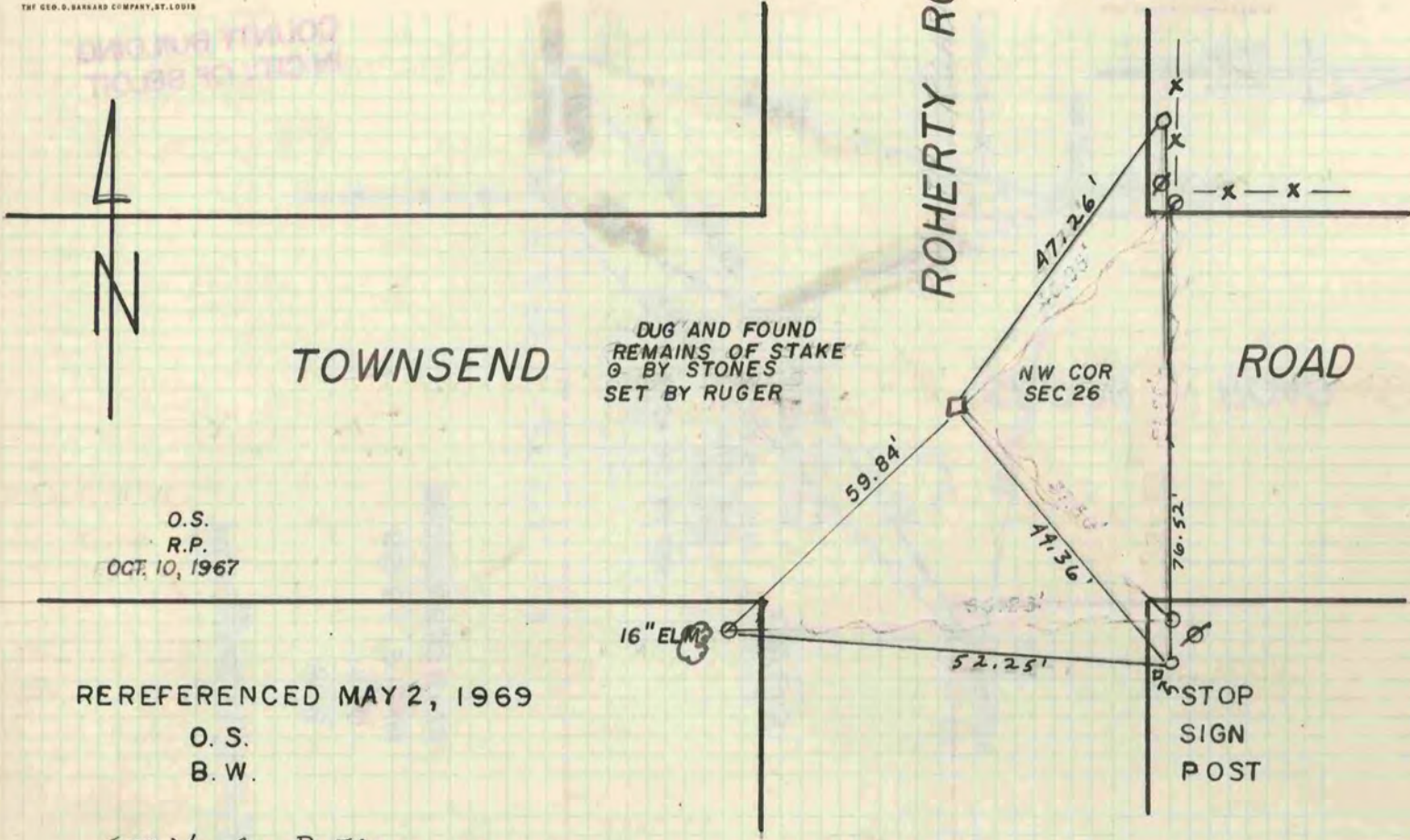
Rock County, Wisconsin, made OCT the 10 1967

I hereby certify that the following is a correct record of said survey as made by me.

COUNTY BUILDING  
IN CITY OF BELOIT

*R. B. Kersh*  
County Surveyor.

THE GEO. D. BARRETT COMPANY, ST. LOUIS



O.S.  
R.P.  
OCT. 10, 1967

REREFERENCED MAY 2, 1969

O. S.  
B. W.

SEE Vol. 4, P. 520

MINERAL POINT

ROAD

S 1/4 COR SEC 26 - DUG AND FOUND 1/2" IRON ROD WITH 6" I-BEAM ON N-SIDE BY SMALL H.M.'S AS SET BY KERSH 1909

OCT. 10, 1967  
O.S.  
R.P.

