

PLAT AND RECORD

369

8,9,17,16
Of a Survey on Section 28 T 4N R 13 E. of the 4 P. M. in MILTON Township
Rock County, Wisconsin, made MAY the 23 1968

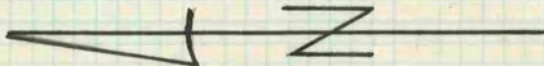
I hereby certify that the following is a correct record of said survey as made by me.

COUNTY BUILDING
IN CITY OF БЕЛОIT

R. B. Egan

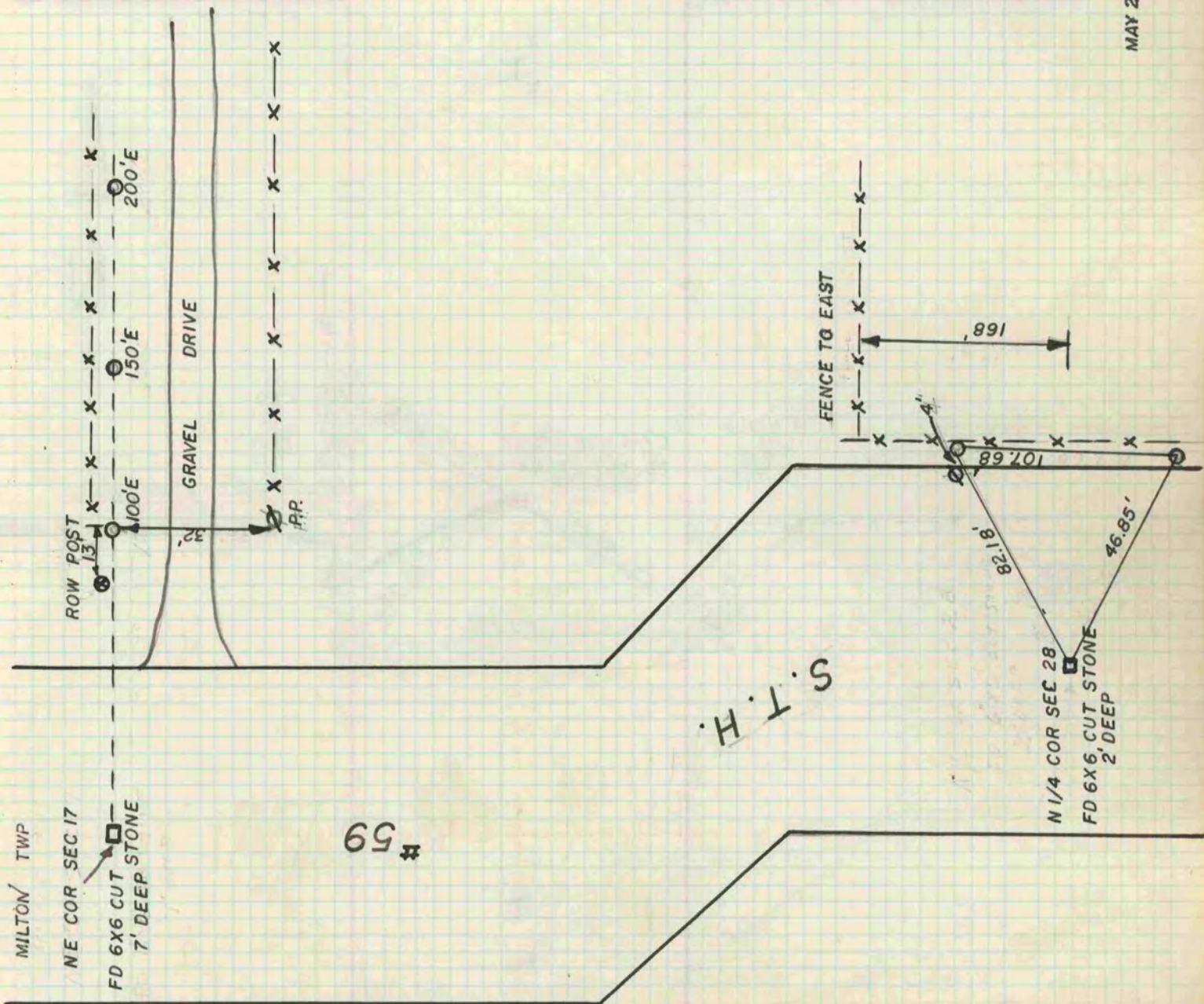
County Surveyor.

THE GEO. D. BARBARO COMPANY, ST. LOUIS



H.C.
O.S.

MAY 23, 1968



#59

S.T.H.