

# PLAT AND RECORD

Of a Survey on Section 2 T 1 R 14 E. of the 4 P. M. in CLINTON Township

Rock County, Wisconsin, made NOVEMBER the 26 1968

I hereby certify that the following is a correct record of said survey as made by me.

**COUNTY BUILDING  
IN CITY OF BELOIT**

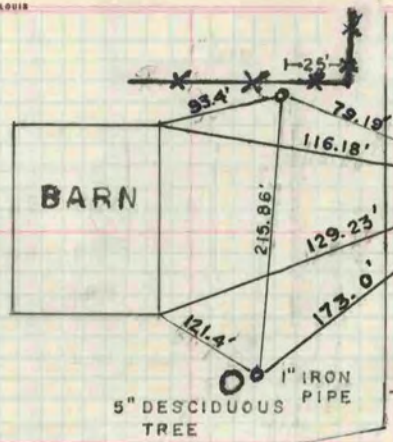
*R. B. Batten*

County Surveyor.

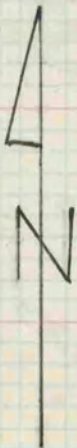
THE GEO. P. BARNARD COMPANY, ST. LOUIS

Note: See Vol. 2, Pg. 76

← FOUND POINTED H.H.  
AT E. 1/4 CORNER  
OF SEC. 2-1-14



S. T. H. 15



SUMMERVILLE ROAD

EAST LINE OF SECTION 2-1-14

R. J. K.  
G. B.  
11/26/68

