

PLAT AND RECORD

Of a Survey on Section 23 T 1 R 13 E. of the 4 P. M. in TURTLE Township

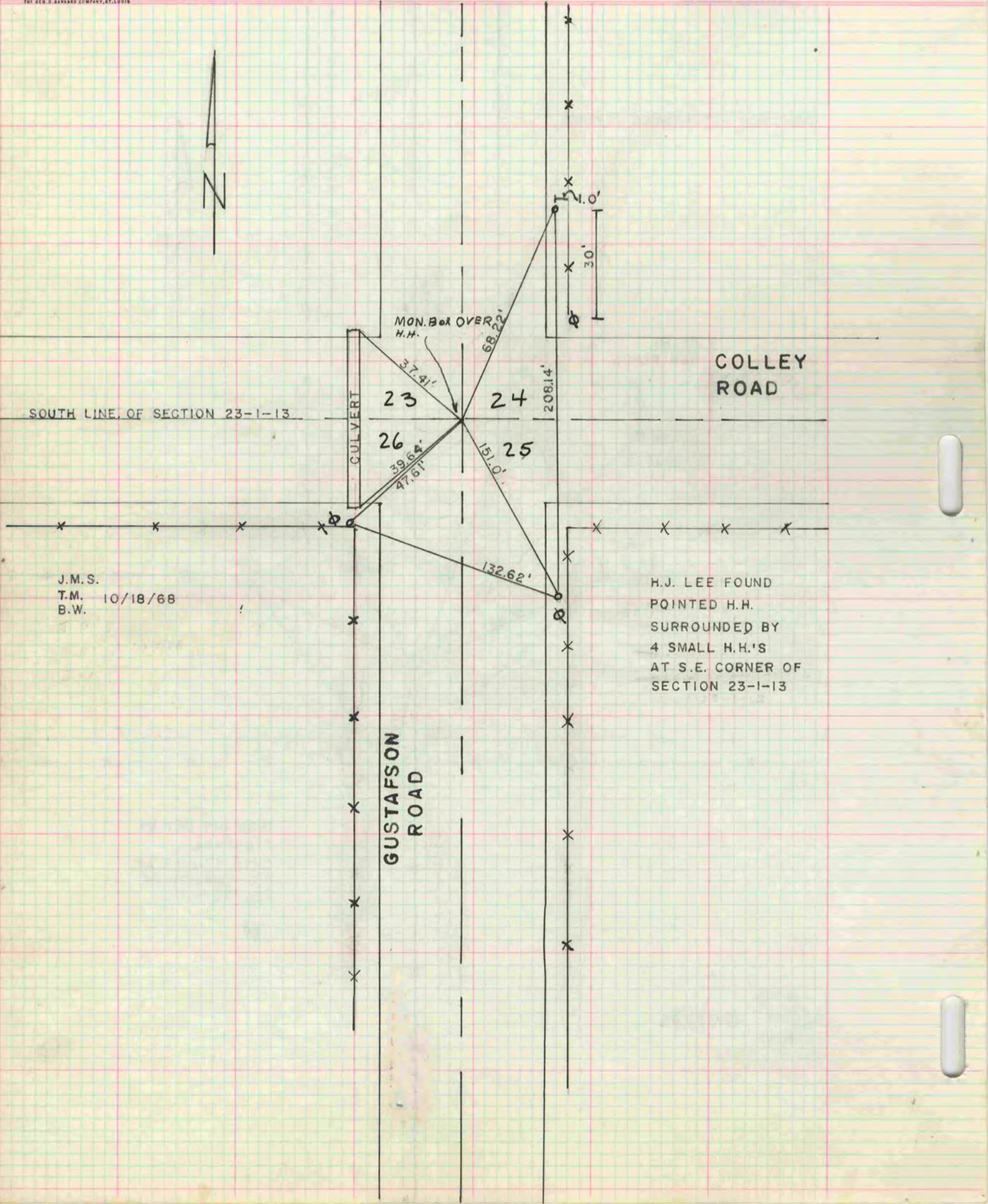
Rock County, Wisconsin, made OCTOBER the 18 1968

I hereby certify that the following is a correct record of said survey as made by me.

COUNTY BUILDING
IN CITY OF BELOIT

R. H. B. [Signature]

County Surveyor.



J.M.S.
T.M. 10/18/68
B.W.

H.J. LEE FOUND
POINTED H.H.
SURROUNDED BY
4 SMALL H.H.'S
AT S.E. CORNER OF
SECTION 23-1-13