

# PLAT AND RECORD

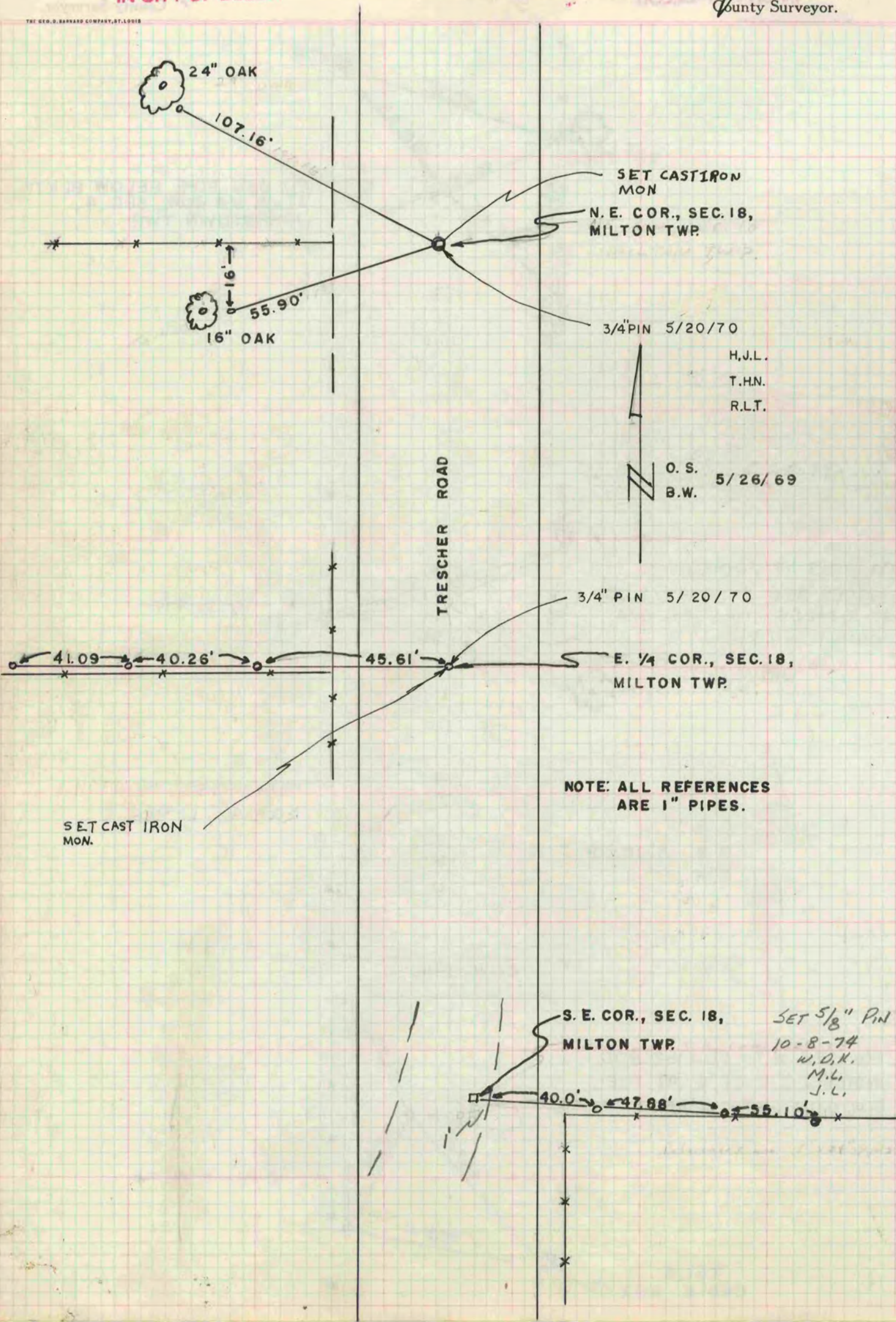
Of a Survey on Section 18 T 4 R 13 E. of the 4 P. M. in MILTON Township

Rock County, Wisconsin, made MAY the 26 1969

I hereby certify that the following is a correct record of said survey as made by me.

COUNTY BUILDING  
IN CITY OF BELOIT

*Robt. E. ...*  
County Surveyor.



THE GEO. D. BARNARD COMPANY, ST. LOUIS