

# PLAT AND RECORD

Of a Survey on Section 14 T 4 R 10 E. of the 4 P. M. in UNION Township

Rock County, Wisconsin, made the 1970

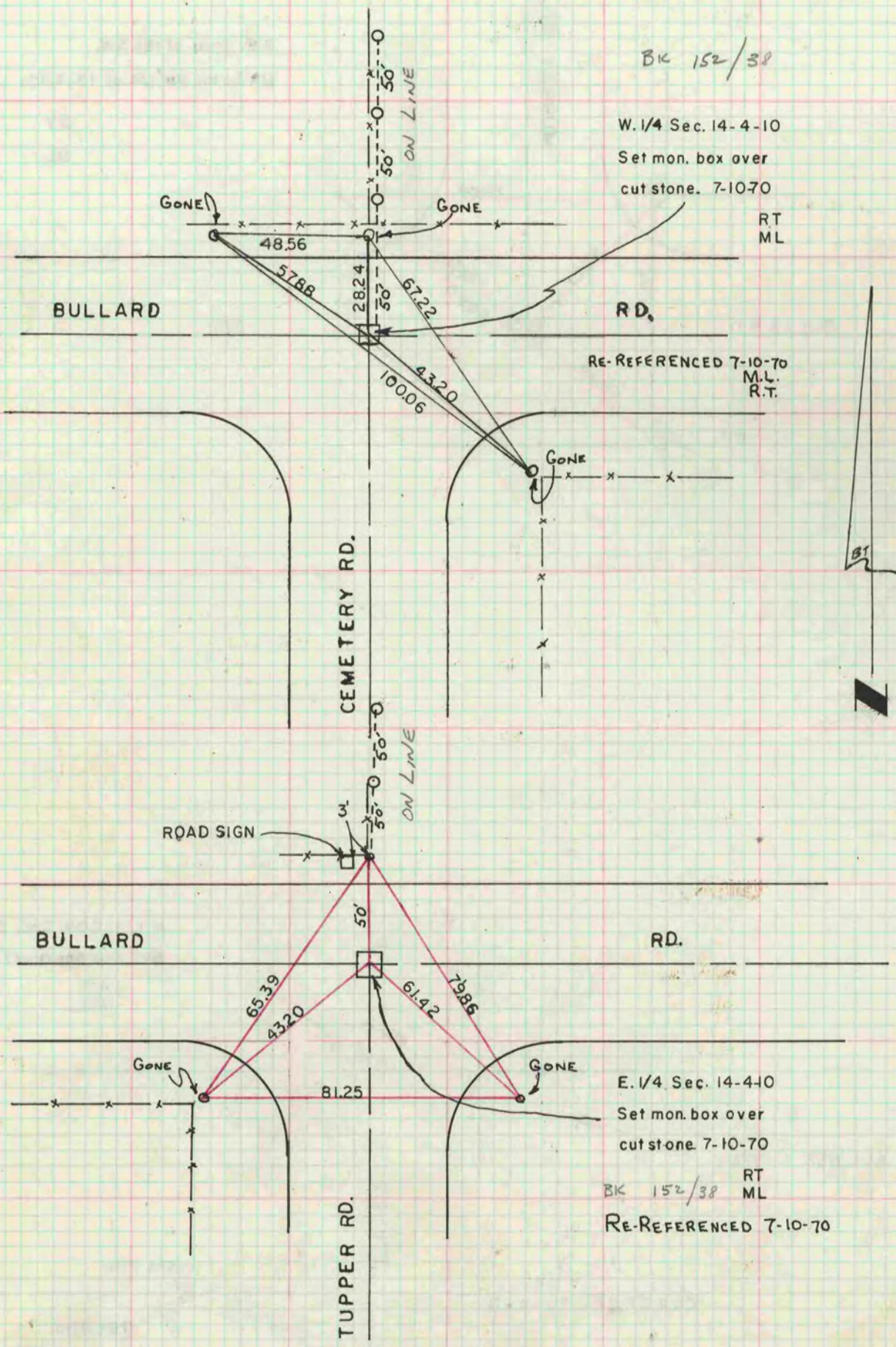
I hereby certify that the following is a correct record of said survey as made by me.

*Russell E. Gorman Jr*

County Surveyor.

COUNTY BUILDING  
IN CITY OF BELoit

THE GEO. G. BARVARD COMPANY, ST. LOUIS



BK 152/38

W. 1/4 Sec. 14-4-10  
Set mon. box over  
cut stone. 7-10-70

RT  
ML

RE-REFERENCED 7-10-70  
M.L.  
R.T.

E. 1/4 Sec. 14-4-10  
Set mon. box over  
cut stone 7-10-70

BK 152/38 RT  
ML

RE-REFERENCED 7-10-70