

# PLAT AND RECORD

Of a Survey on Section 8 T 2 N R 13 E. of the 4 P. M. in LA PRAIRIE Township

Rock County, Wisconsin, made OCTOBER the 20 1970

I hereby certify that the following is a correct record of said survey as made by me.

**COUNTY BUILDING  
IN CITY OF BELOIT**

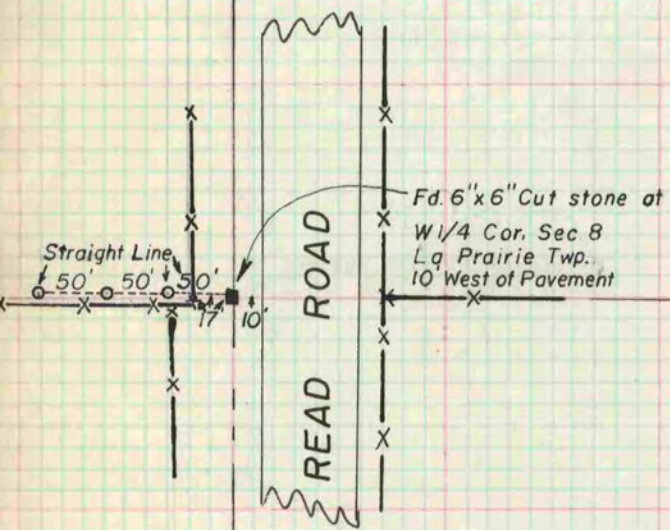


County Surveyor.

NOTE: O = 1"x24" IRON PIPE REF. PTS.  
OCT. 20, 1970  
JMS.  
R.T.

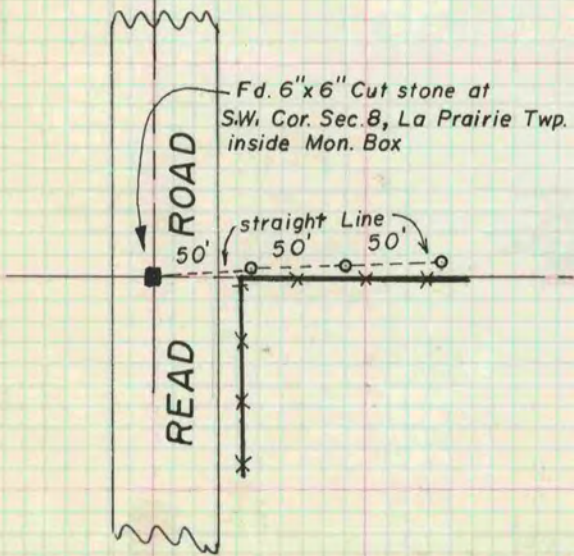


See Page 453 of Vol. 4 →



See Page 453 of Vol. 4 →

O = Reference Pipes 1"x24"  
JS  
RT



See Page 453 of Vol. 4 →