

PLAT AND RECORD

Of a Survey on Section 14 T. 4 N. R. 12 E. of the 4 P. M. in FULTON Township

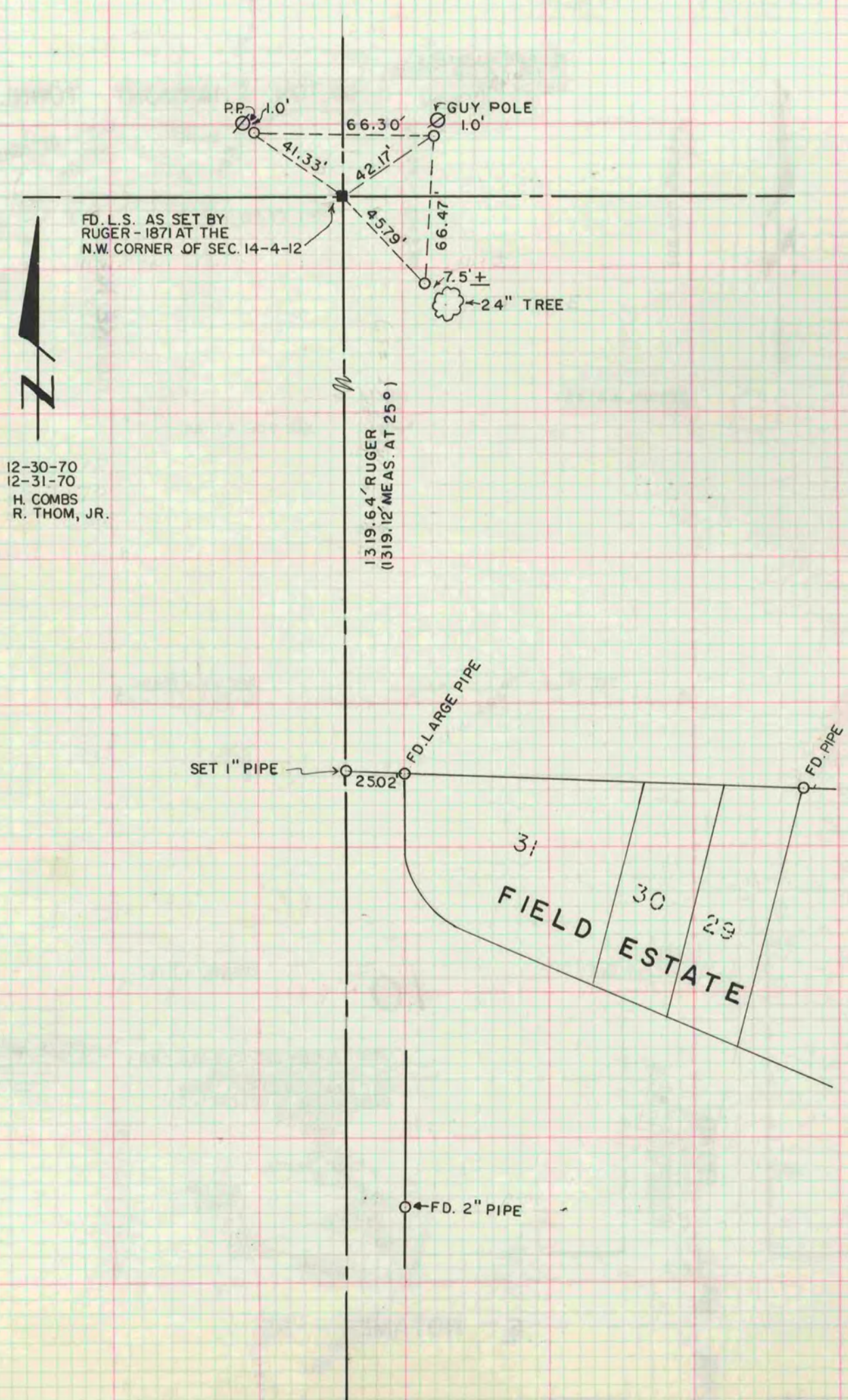
Rock County, Wisconsin, made DECEMBER the 30, 31 1970

I hereby certify that the following is a correct record of said survey as made by me.

R. B. Atkinson

COUNTY BUILDING
IN CITY OF BELOIT

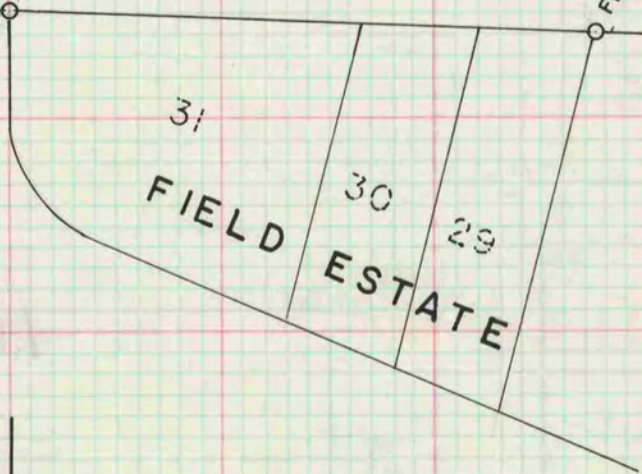
County Surveyor.



FD. L.S. AS SET BY
RUGER - 1871 AT THE
N.W. CORNER OF SEC. 14-4-12

12-30-70
12-31-70
H. COMBS
R. THOM, JR.

1319.64 RUGER
(1319.12 MEAS. AT 25°)



FD. 2" PIPE