

PLAT AND RECORD

511

Of a Survey on Section **36** T **2N** R **14** E. of the 4 P. M. in **BRADFORD** Township

Rock County, Wisconsin, made **JUNE** the **10** 1971

I hereby certify that the following is a correct record of said survey as made by me.

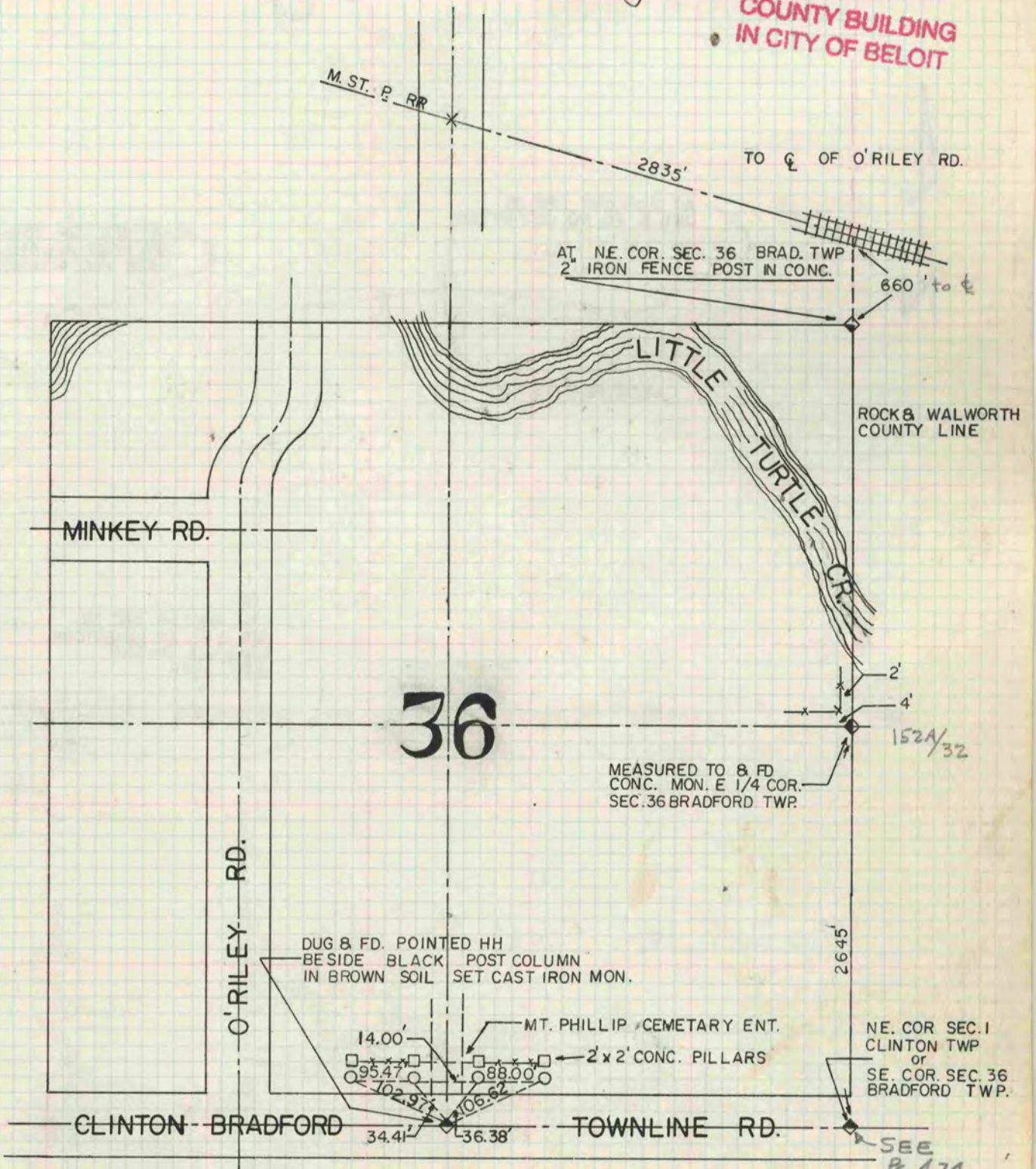
COUNTY BUILDING
IN CITY OF BELOIT

Hugh J. See
County Surveyor.

COUNTY BUILDING
IN CITY OF BELOIT

COUNTY BUILDING
IN CITY OF BELOIT

THE GEO. S. BARNARD COMPANY, ST. LOUIS



NOTE 0-1" x 24" IRON PIPE REF. MON.

JMS
JEL

SEE
Pg 474