

PLAT AND RECORD

Of a Survey on Section 26 T 2N R 13 E. of the 4 P. M. in LAPRAIRIE Township

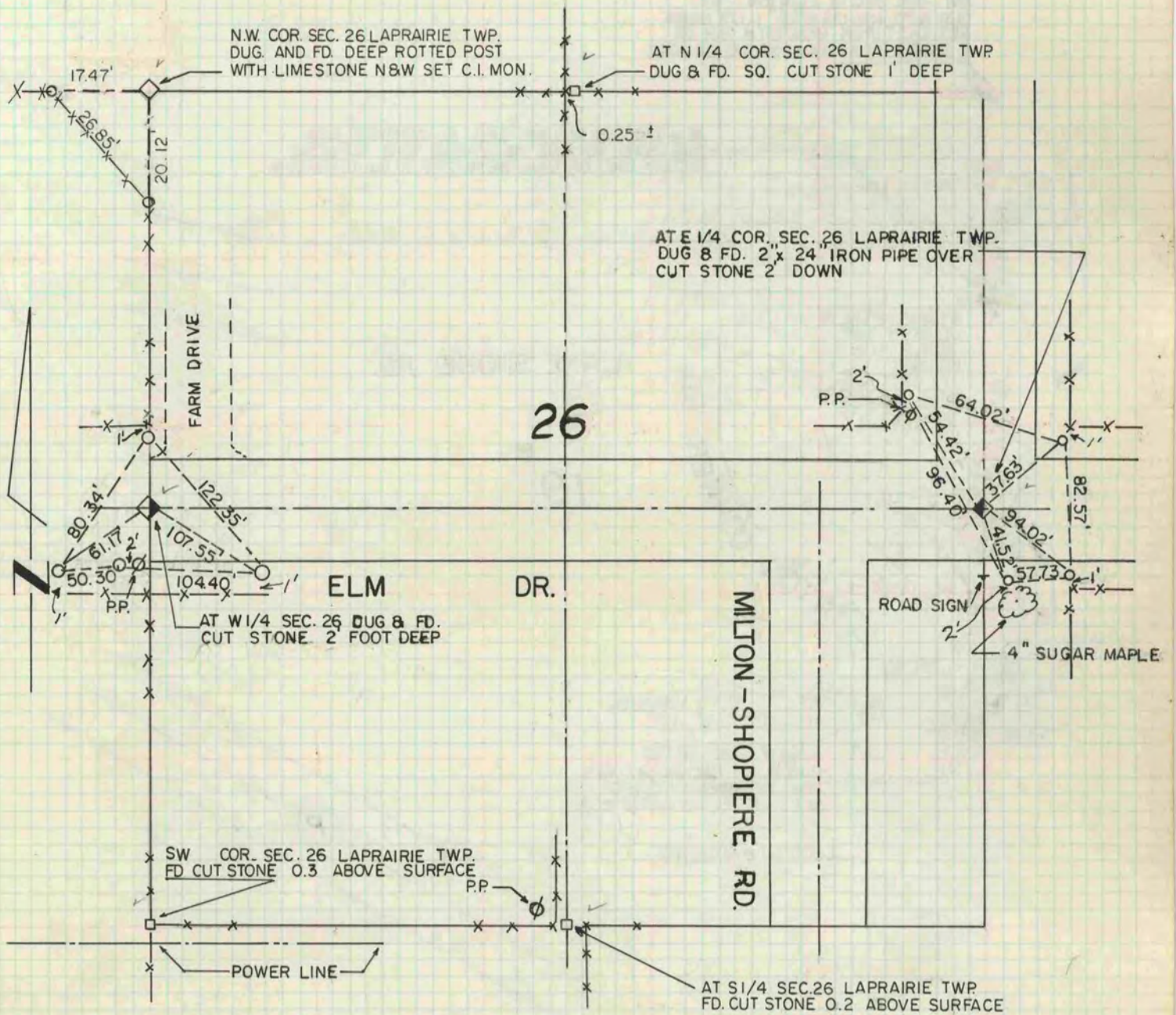
Rock County, Wisconsin, made JULY the 6 1971

I hereby certify that the following is a correct record of said survey as made by me.

August J. Bee
County Surveyor.

COUNTY BUILDING
IN CITY OF BELOIT

COUNTY BUILDING
IN CITY OF BELOIT



○ = 1" x 24" IRON PIPE REF. MON.

7-6-71
J.M.S
B.K.
J.E.L.