

MICROFILMED PLAT AND RECORD

Of a Survey on Section 36 T 1 R 11 E. of the 4 P. M. in Newark Township
Rock County, Wisconsin, made February the 27th 1852

I hereby certify that the following is a correct record of said survey as made by me.

(Signed) Peter McYear
R.N.B.

County Surveyor

COUNTY BUILDING
CITY OF JANESVILLE

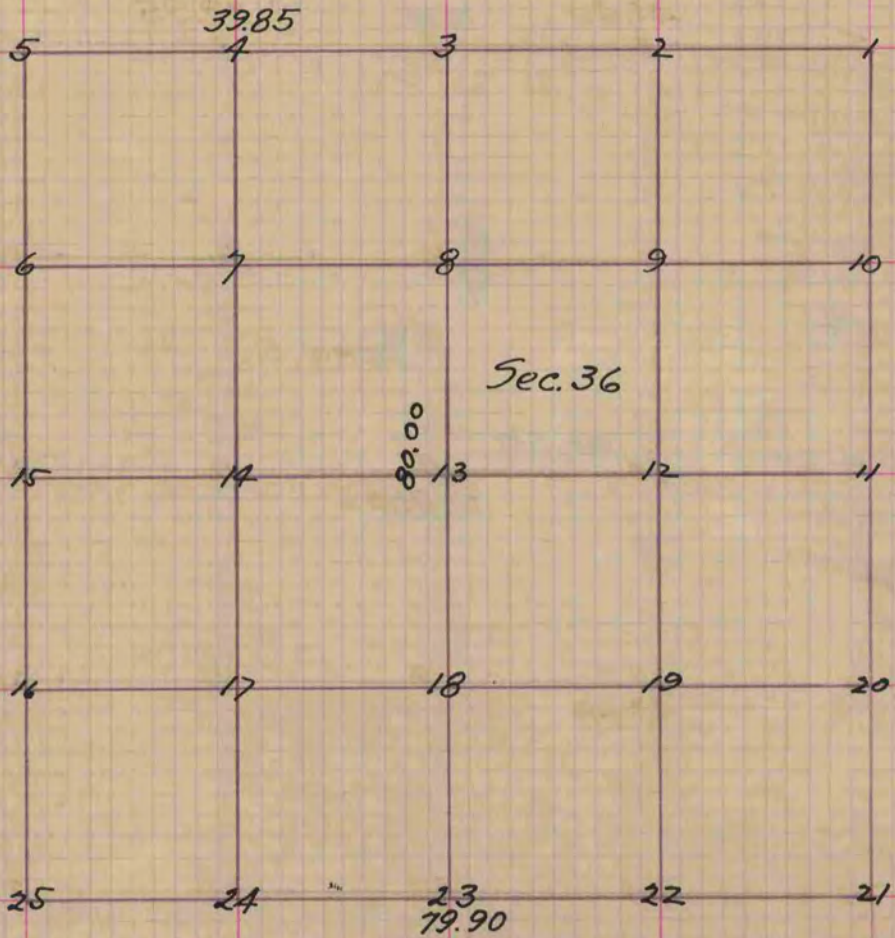


Figure 13 represents the centre of the Section
Fig. 13. Br. O. 24 S. 35 E. 1.08 Also Br. O. 10 S. 76 E. 91

Copied from Page 13 Vol. County Surveyors Book