

PLAT AND RECORD

203
V-1

MICROFILMED

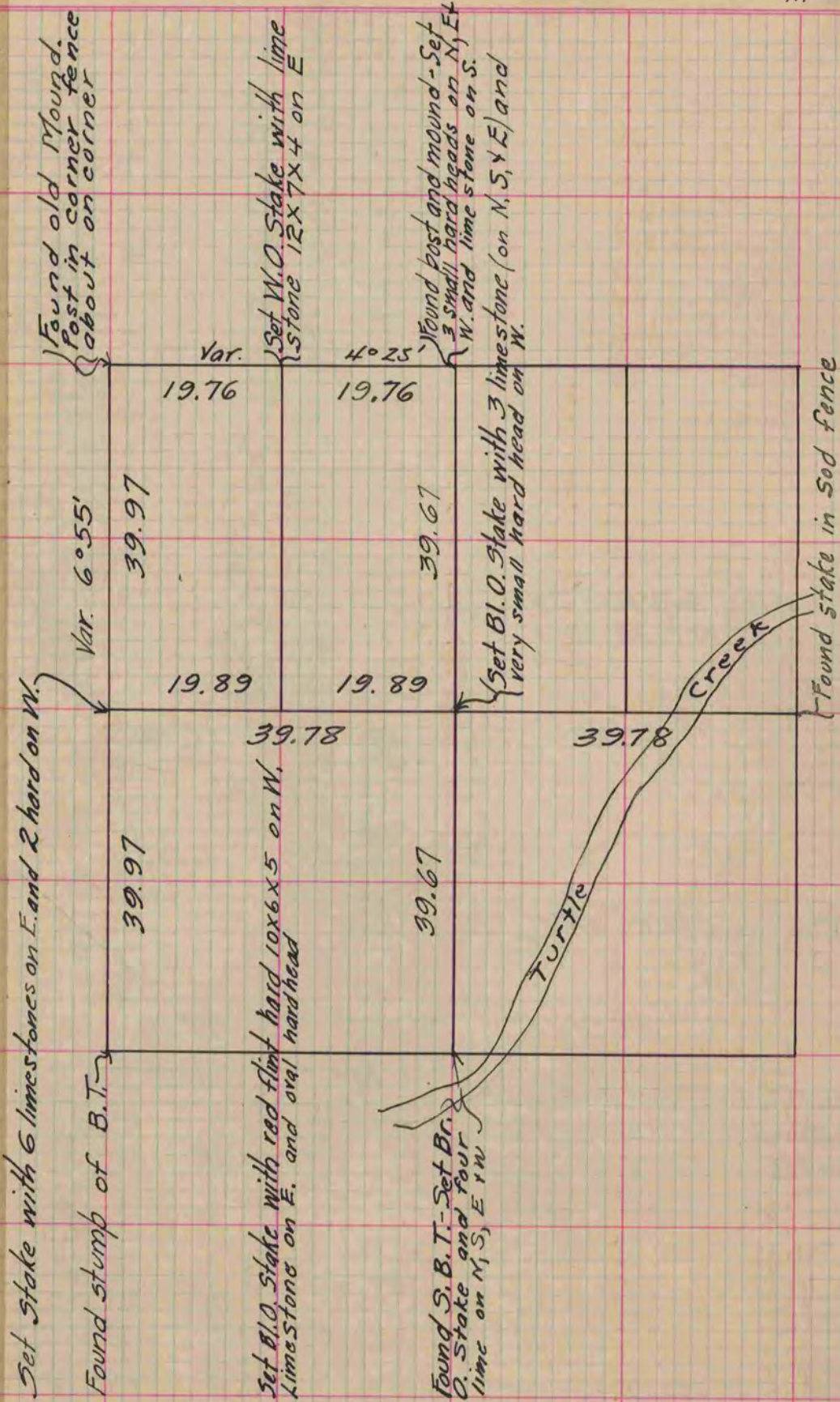
Of a Survey on Section 35 T 2 R 13 E. of the 4 P. M. in La Prairie Township

Rock County, Wisconsin, made May the 19th 1864

I hereby certify that the following is a correct record of said survey as made by me.

COUNTY BUILDING
CITY OF JANESVILLE

(Signed) S. D. Locke
R.H.B. County Surveyor.



Copied from Upper 1/2 of Vol. One Original County Surveyors Record