

V-1 MICROFILMED

# PLAT AND RECORD

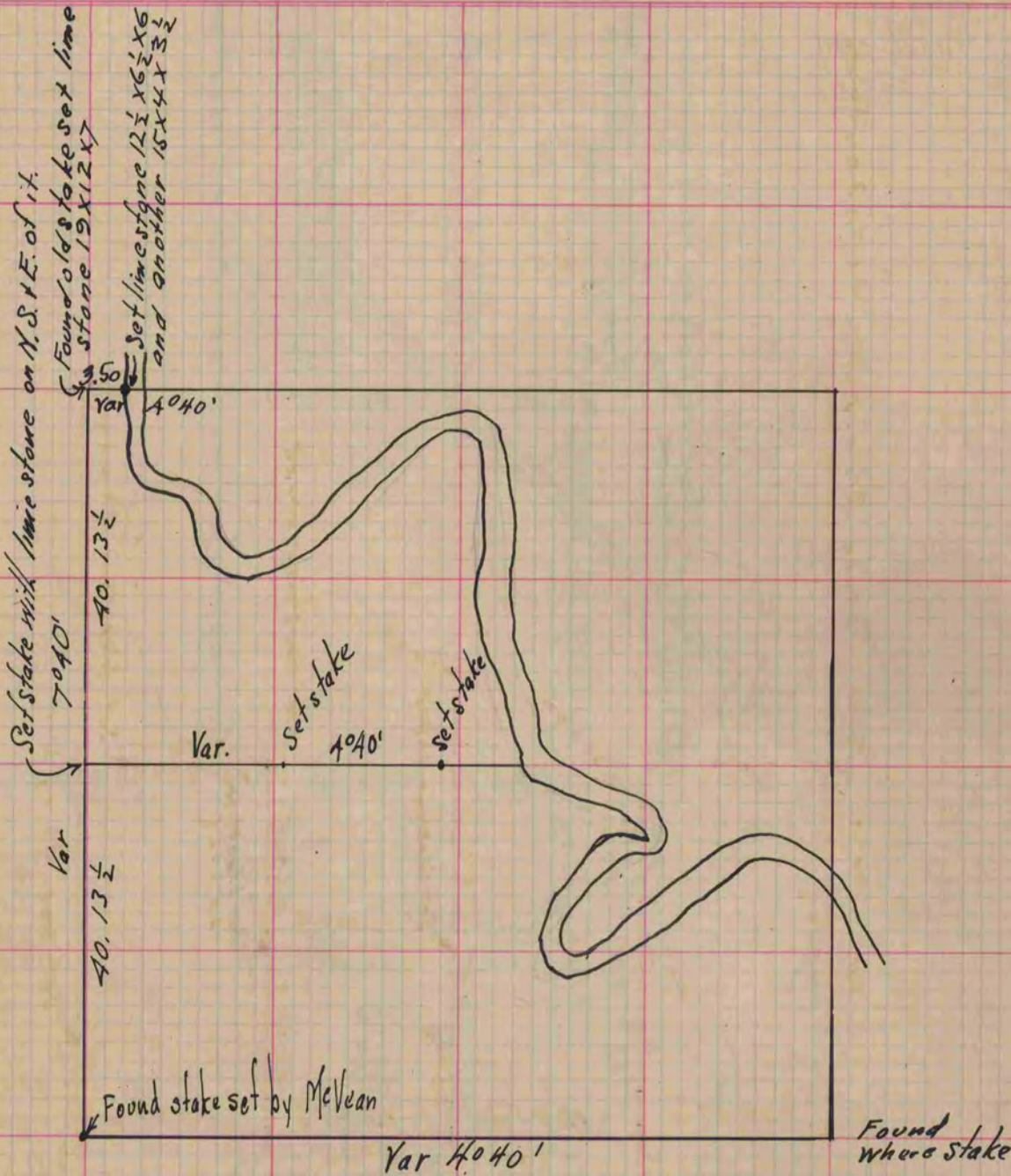
Of a Survey on Section 28 T 1 R 10 E. of the 4 P. M. in Aron Township

Rock County, Wisconsin, made December the 6 1864

I hereby certify that the following is a correct record of said survey as made by me.

COUNTY BUILDING  
CITY OF JANESVILLE

(Signed) S. O. Locke  
R.H.B. County Surveyor.



Copied from upper 1/2 of Page 213 Vol. 1. Original County Surveyors Record