

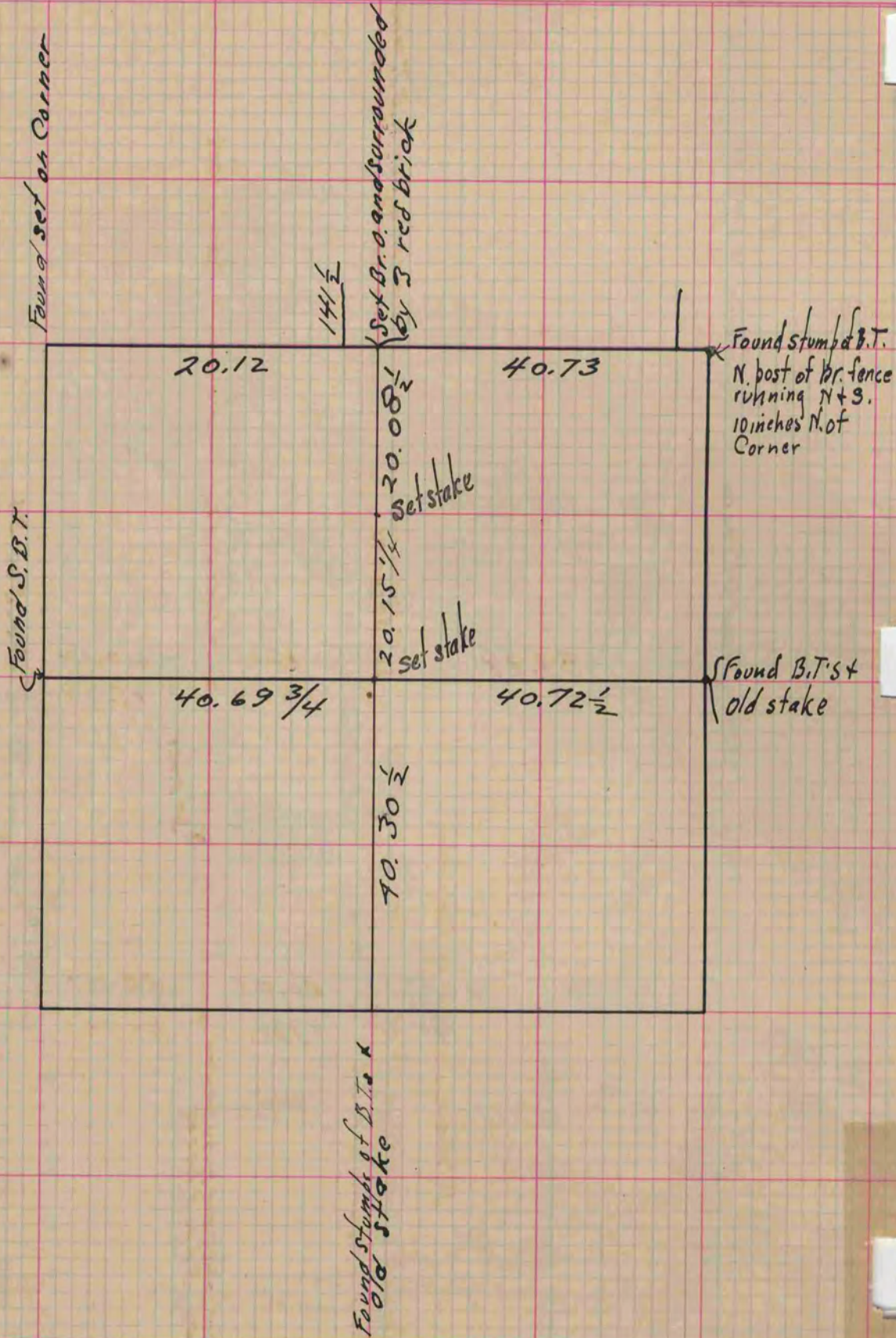
# MICROFILMED PLAT AND RECORD

Of a Survey on Section 6 T 4 R 12 E. of the 4 P. M. in Fulton Township  
Rock County, Wisconsin, made January the 10<sup>th</sup> 1865

I hereby certify that the following is a correct record of said survey as made by me.

COUNTY BUILDING  
CITY OF JANESVILLE

(Signed) S. D. Locke  
R. N. B. County Surveyor.



Copied from Upper  $\frac{1}{2}$  of Page 214 Vol. 1. County Surveyors Record