

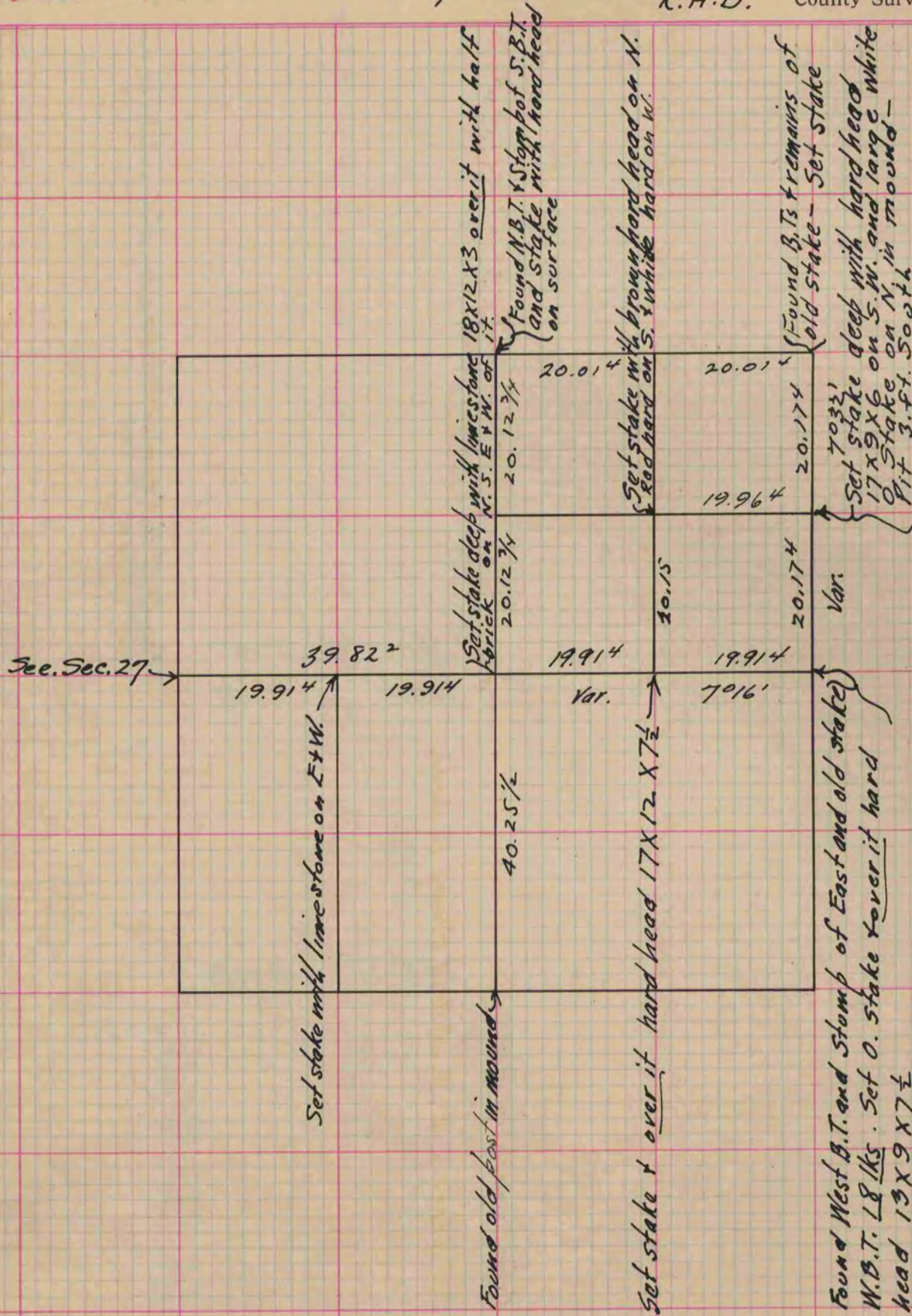
PLAT AND RECORD

Of a Survey on Section 26 T 4 R 10 E. of the 4 P. M. in Union Township
Rock County, Wisconsin, made May the 4th 1865

I hereby certify that the following is a correct record of said survey as made by me.

COUNTY BUILDING
CITY OF JANESVILLE

(Signed) S. D. Locke
R. H. B. County Surveyor.



Copied from Page 217 Vol. 1. Original County Surveyors Record