

V-1 MICROFILMED PLAT AND RECORD

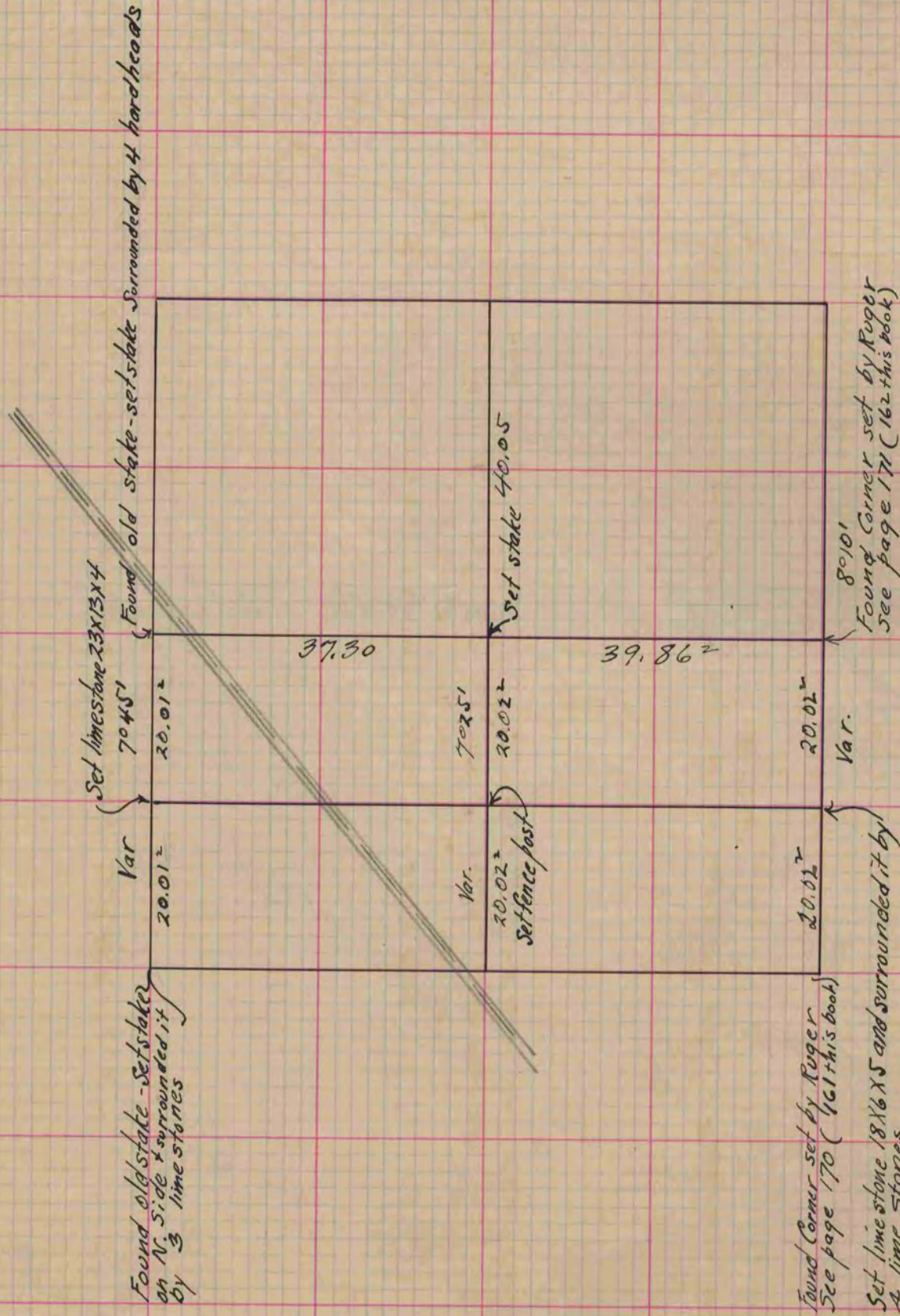
Of a Survey on Section 7 T 2 R 13 E. of the 4 P. M. in La Prairie Township  
Rock County, Wisconsin, made April & September the 18<sup>th</sup> 1865

I hereby certify that the following is a correct record of said survey as made by me.

COUNTY BUILDING  
CITY OF JANESVILLE

(Signed) S. D. Locke  
R. N. B.

County Surveyor.



Copied from Page 222 Vol. 1. Original County Surveyors Record