

MICROFILMED

PLAT AND RECORD

Of a Survey on Section 2 T 2 R 12 E. of the 4 P. M. in Rock Township

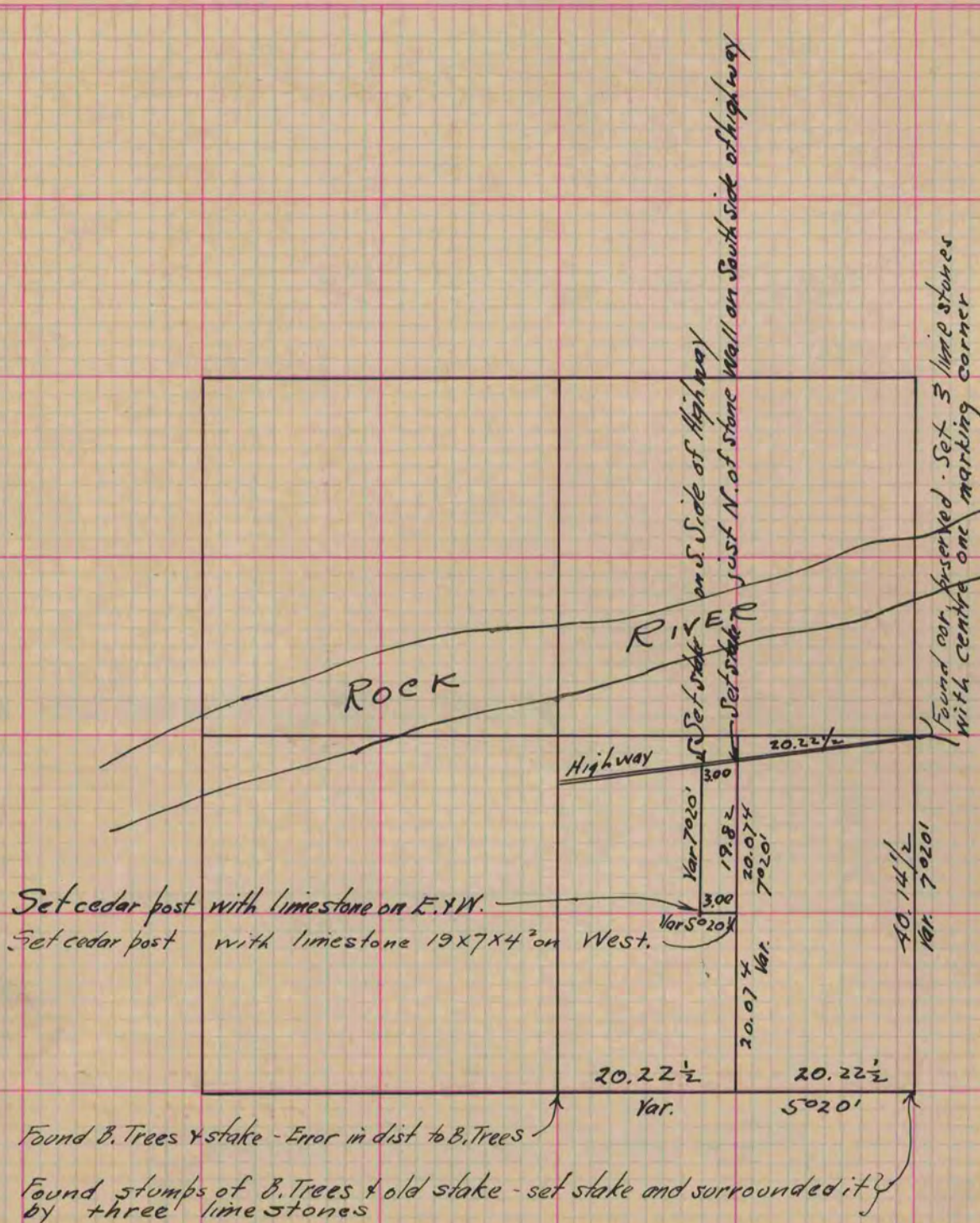
Rock County, Wisconsin, made October the 27th 1865

I hereby certify that the following is a correct record of said survey as made by me.

COUNTY BUILDING
CITY OF JANESVILLE

(Signed) S. D. Locke
R. H. B.

County Surveyor.



(See page 245)

Copied from Page 225 Vol. 1. Original County Surveyors Record