

# PLAT AND RECORD

**MICROFILMED**

Of a Survey on Sections 9 & 16 T 3 R 12 E. of the 4 P. M. in Janesville Township

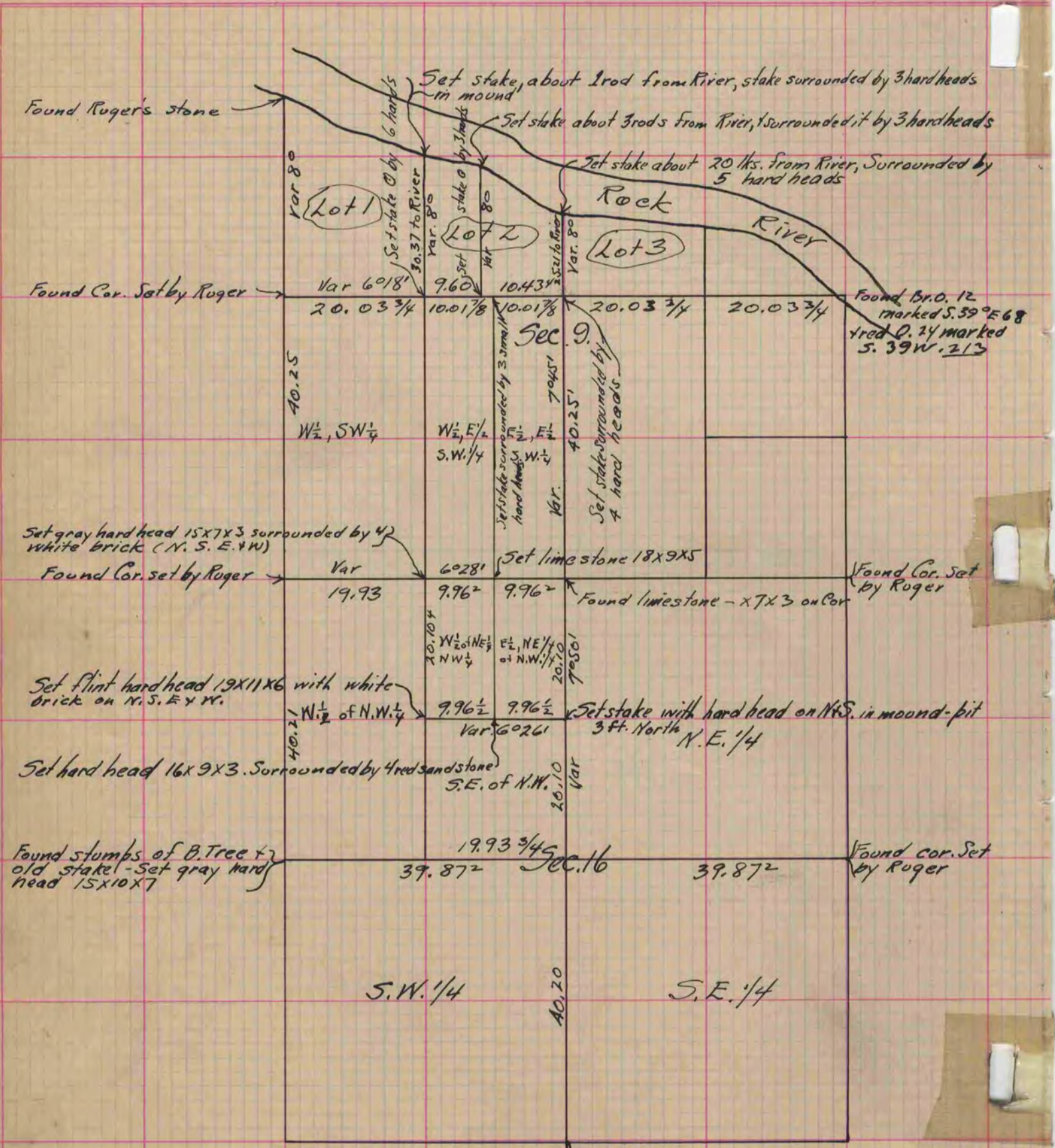
Rock County, Wisconsin, made April the 25<sup>th</sup> + 26<sup>th</sup> 1866

I hereby certify that the following is a correct record of said survey as made by me.

COUNTY BUILDING  
CITY OF JANESVILLE

(Signed) J. D. Locke

R. H. B. County Surveyor.



Found stumps of B. T's - Fence post on Cor.  
Set red Sandstone 15x11x2

Copied from Page 227 Vol. 1. Original County Surveyors Record