

# PLAT AND RECORD

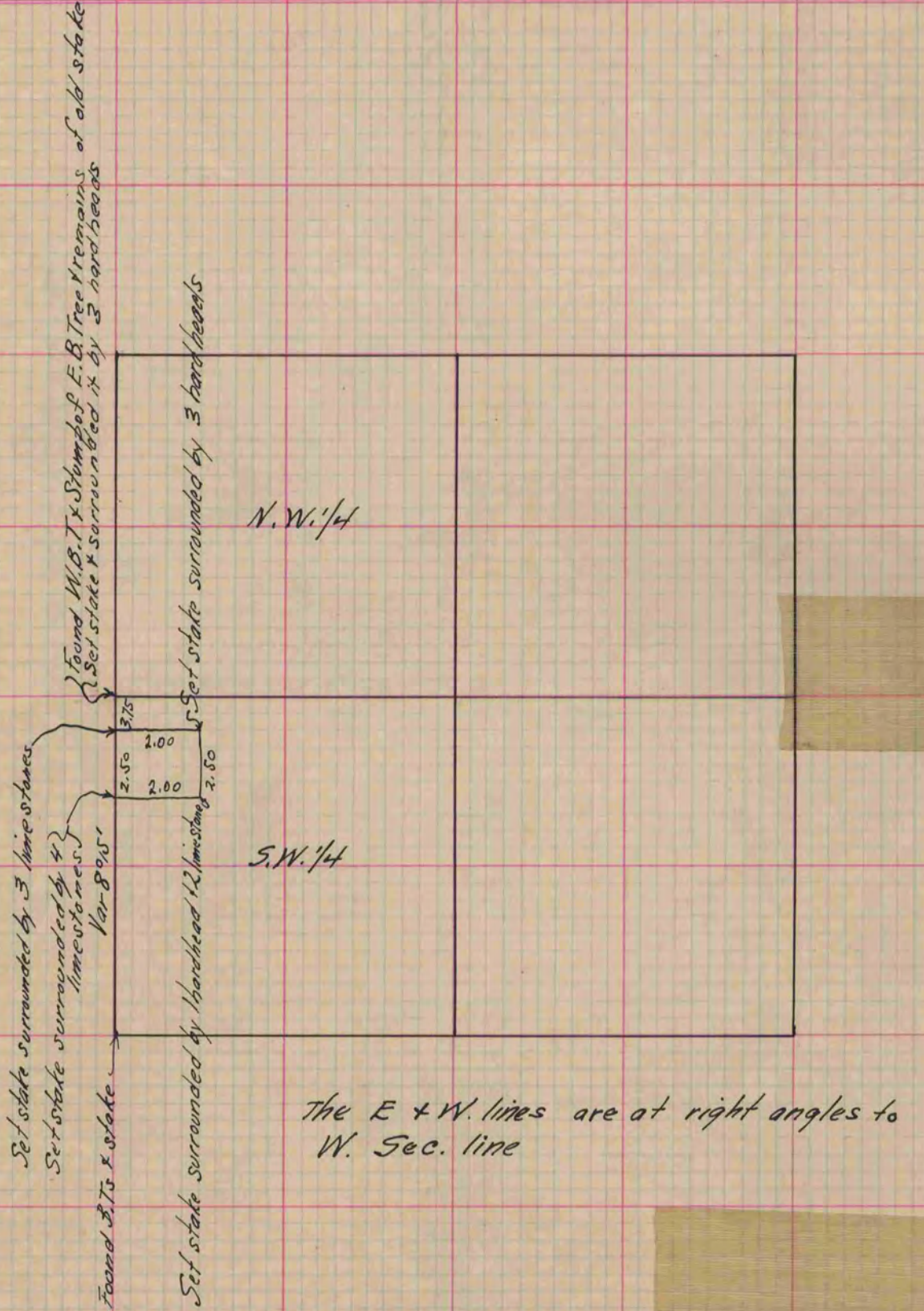
**MICROFILMED**

Of a Survey on Section 8 T 2 R 10 E. of the 4 P. M. in Spring Valley Township  
Rock County, Wisconsin, made May the 17<sup>th</sup> 1866

I hereby certify that the following is a correct record of said survey as made by me.

COUNTY BUILDING  
CITY OF JANESVILLE.

(Signed) S. D. Locke  
R.H.B. County Surveyor.



Copied from Page 231 Vol. 1. Original County Surveyors Record