

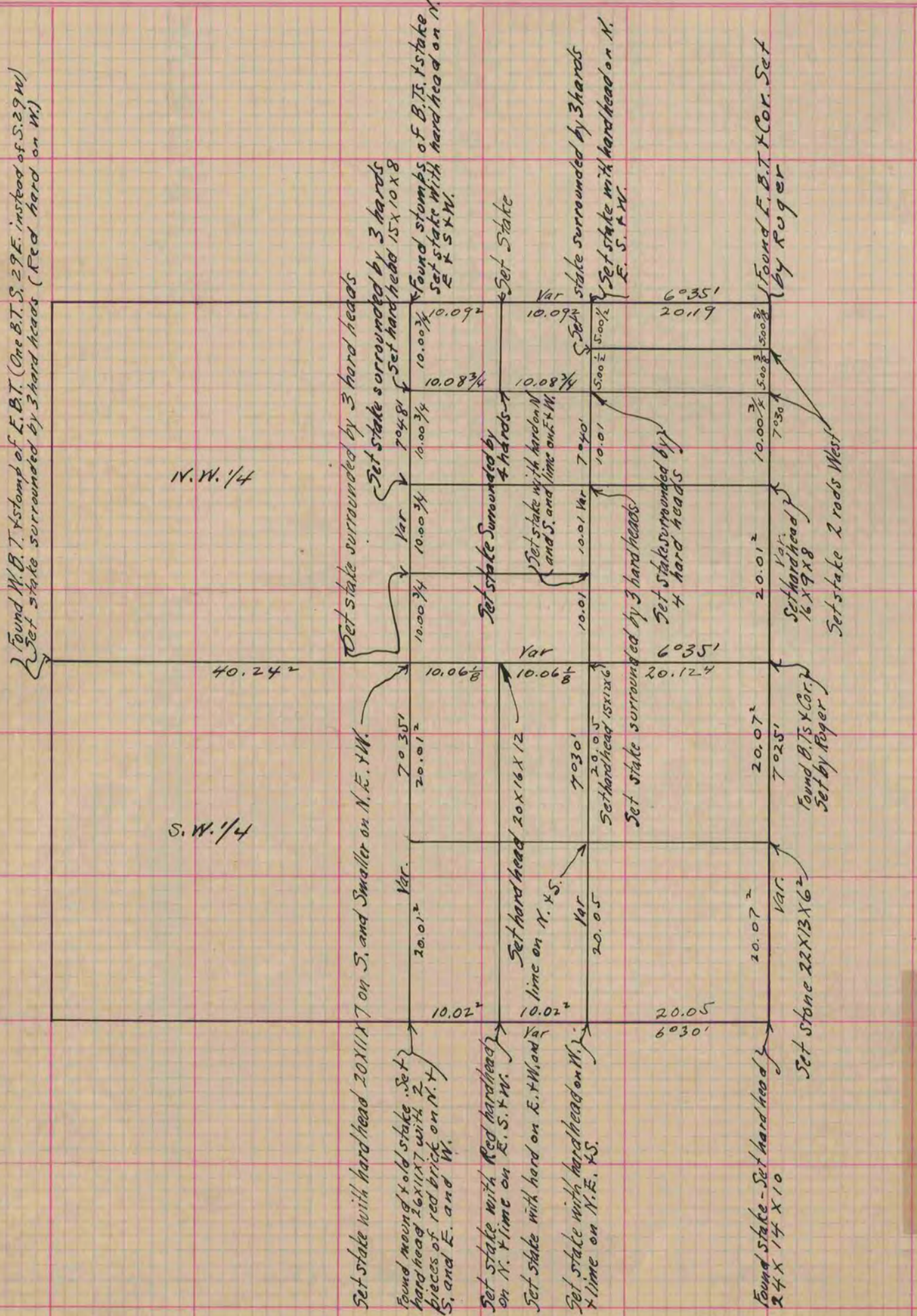
V-1 MICROFILMED PLAT AND RECORD

Of a Survey on Section 15 T 3 R 13 E. of the 4 P. M. in Harmony Township
Rock County, Wisconsin, made June the 9 13 1866

I hereby certify that the following is a correct record of said survey as made by me.

COUNTY BUILDING
CITY OF JANESVILLE

(Signed) S. D. Locke
R. H. B. County Surveyor.



Copied from lower 1/2 of Page 233 Vol. 1. Original County Surveyors Record