

# MICROFILMED PLAT AND RECORD

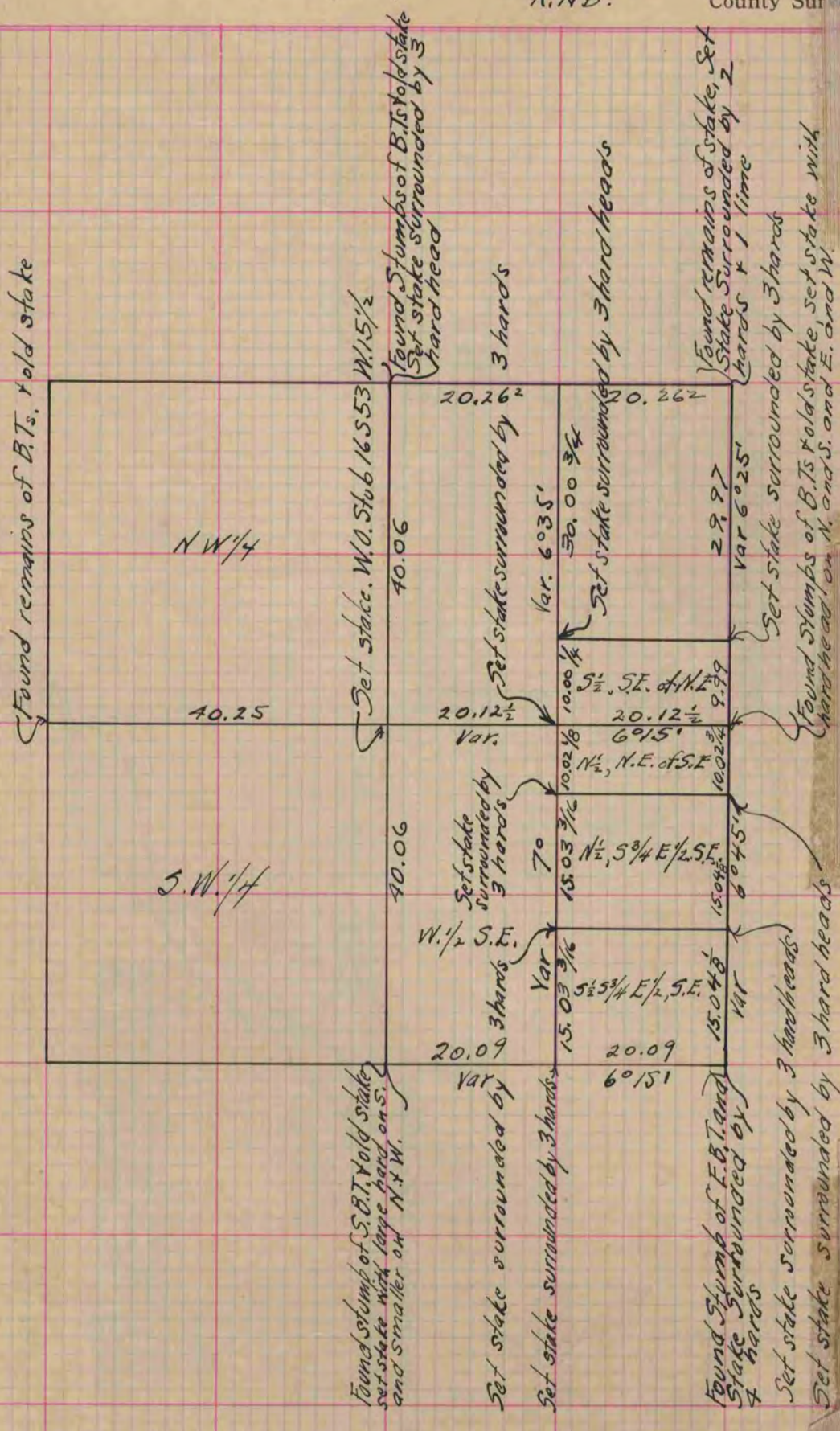
Of a Survey on Section 23 T 1 R 14 E. of the 4 P. M. in Clinton Township  
Rock County, Wisconsin, made July the 16 17 1866

COUNTY BUILDING  
CITY OF JANESVILLE

I hereby certify that the following is a correct record of said survey as made by me.

(Signed) S. D. Locke  
R.N.B.

County Surveyor



Copied from Page 238 Vol. 1. Original County Surveyors Record