

PLAT AND RECORD

379
V-1

MICROFILMED

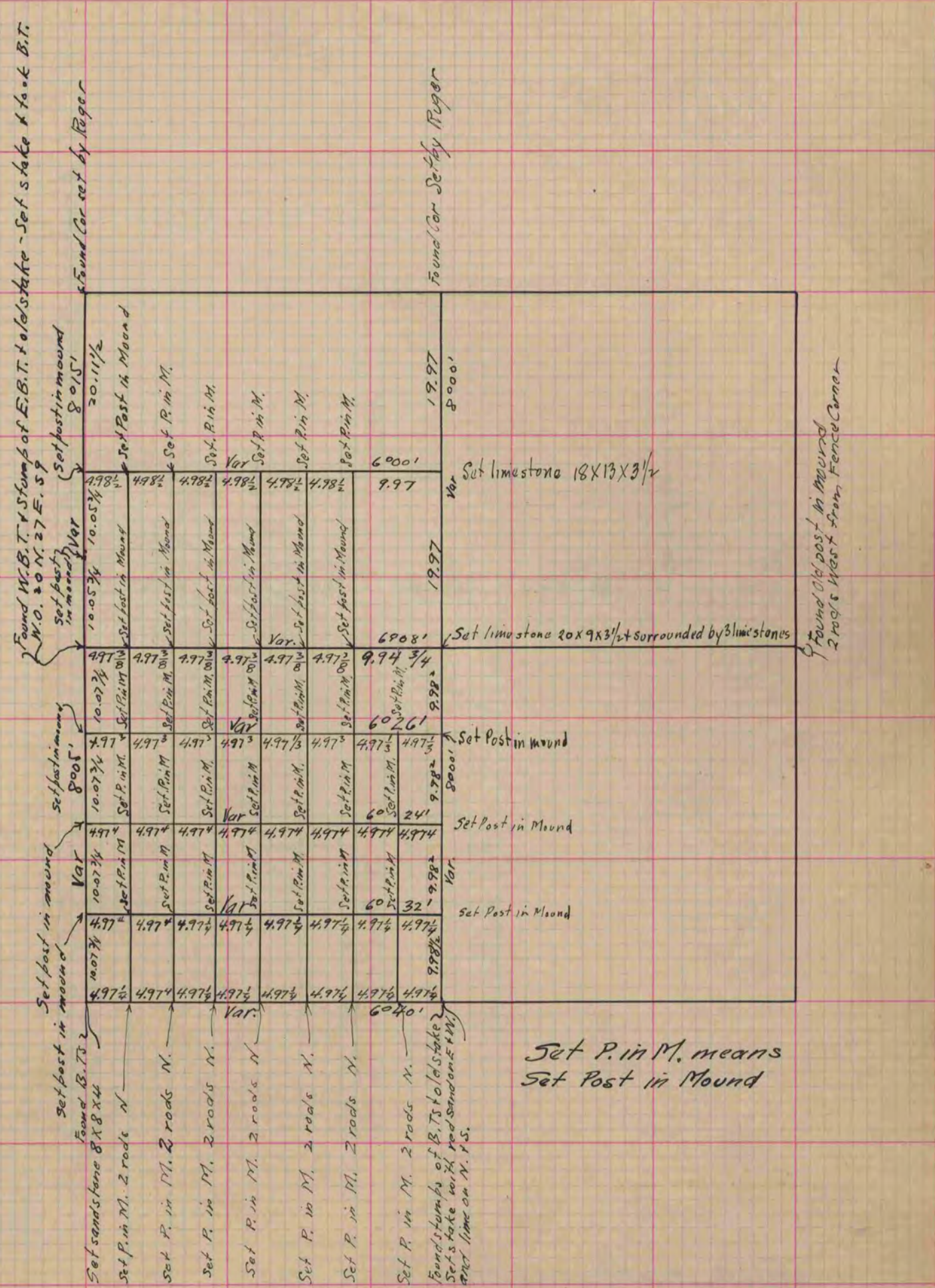
Of a Survey on Section 25 T 3 R 10 E. of the 4 P. M. in Magnolia Township

Rock County, Wisconsin, made January the 1, 2, 3, & 4 1867

I hereby certify that the following is a correct record of said survey as made by me.

COUNTY BUILDING
CITY OF JANESVILLE

(Signed) J. D. Locke
R. H. B. County Surveyor.



Copied from Page 243 Vol. 1, Original County Surveyors Record