

V-1 MICROFILMED PLAT AND RECORD

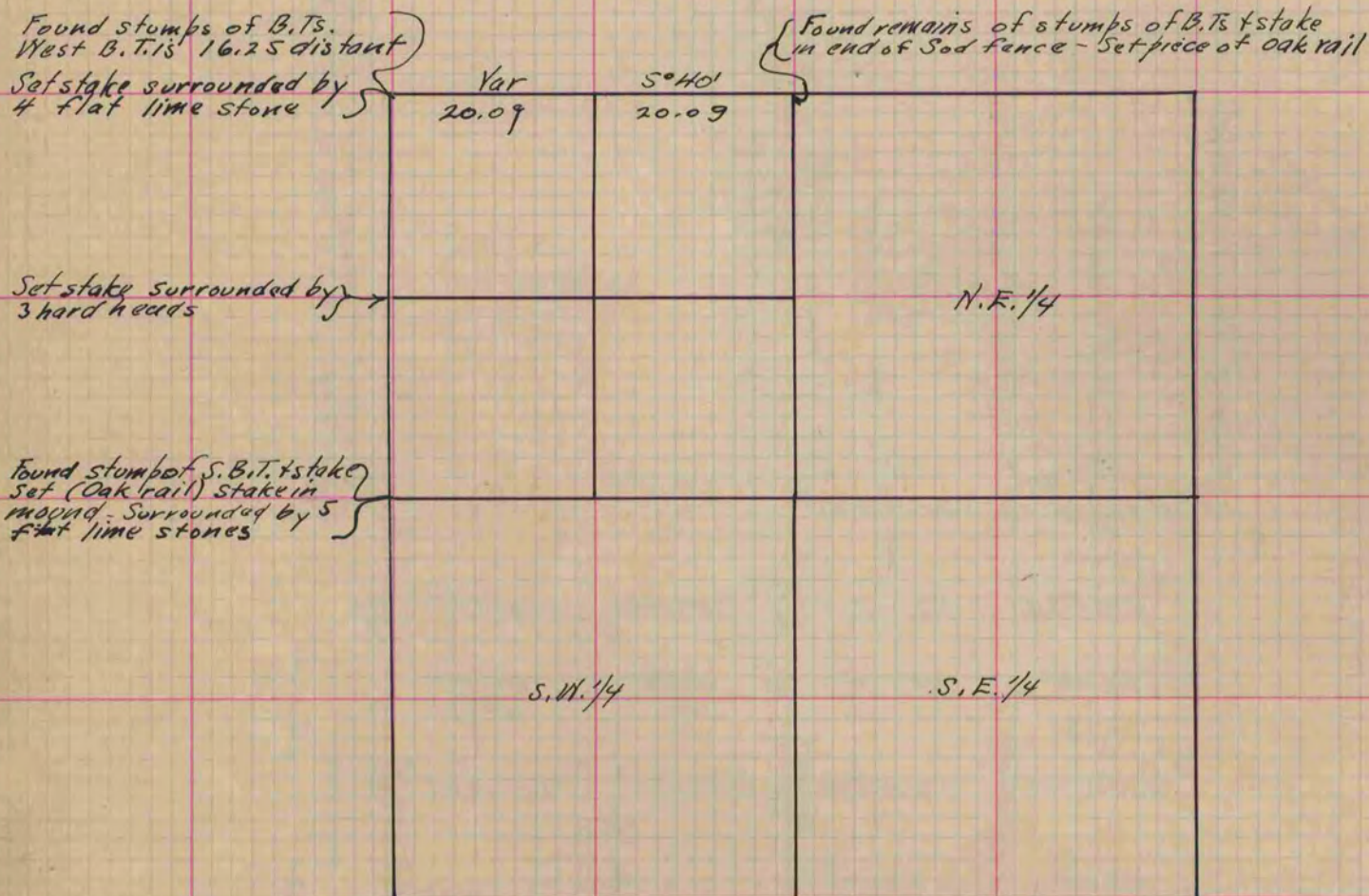
CITY OF JANESVILLE

Of a Survey on Section 11 T 1 R 10 E. of the 4 P. M. in Aron Township
Rock County, Wisconsin, made October the 3 1867

I hereby certify that the following is a correct record of said survey as made by me.

COUNTY BUILDING
CITY OF JANESVILLE

(Signed) S. D. Locke
R. H. B. County Surveyor.



Copied from Page 250 Vol. 1. Original County Surveyors Record