

PLAT AND RECORD

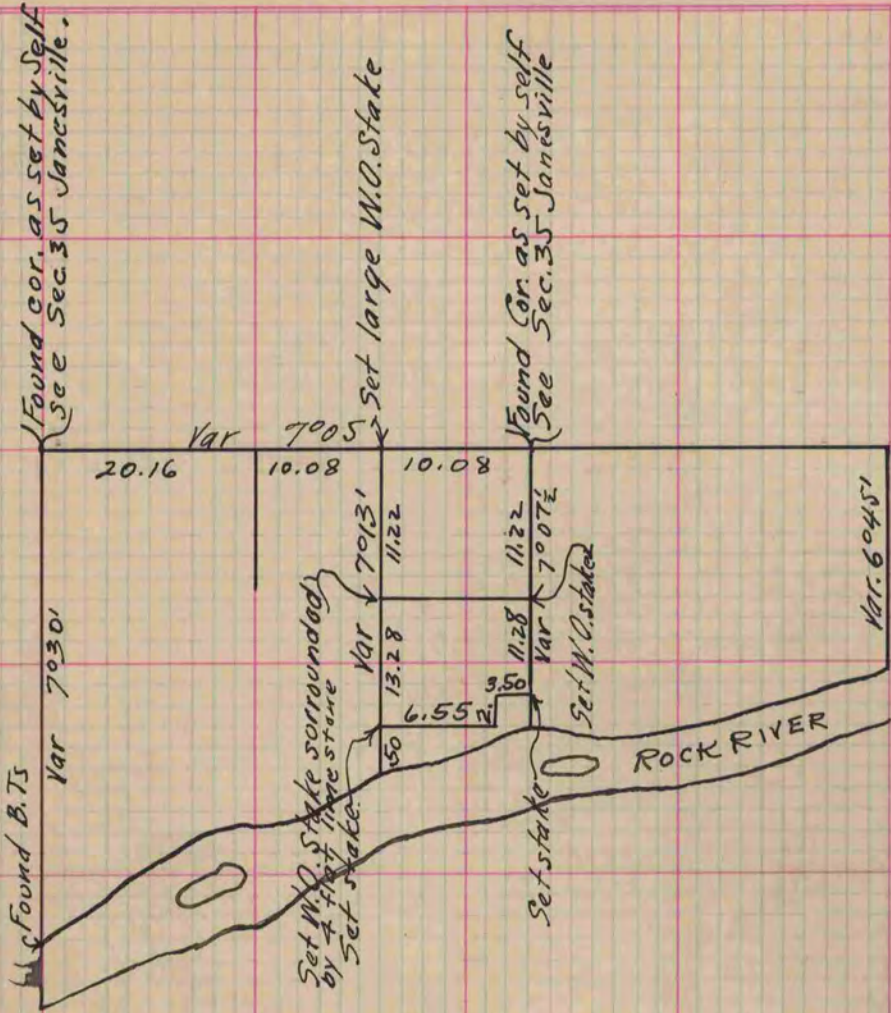
MICROFILMED

Of a Survey on Section 2 T 2 R 12 E. of the 4 P. M. in Rock Township
Rock County, Wisconsin, made March the 14 1868

I hereby certify that the following is a correct record of said survey as made by me.

COUNTY BUILDING
CITY OF JANESVILLE

(Signed) S. D. Locke
R.H.B. County Surveyor.



Copied from Page 262 Vol. 1. Original County Surveyors Record