

# PLAT AND RECORD

**MICROFILMED**

Of a Survey on Section 26 T 3 R 10 E. of the 4 P. M. in Magnolia Township

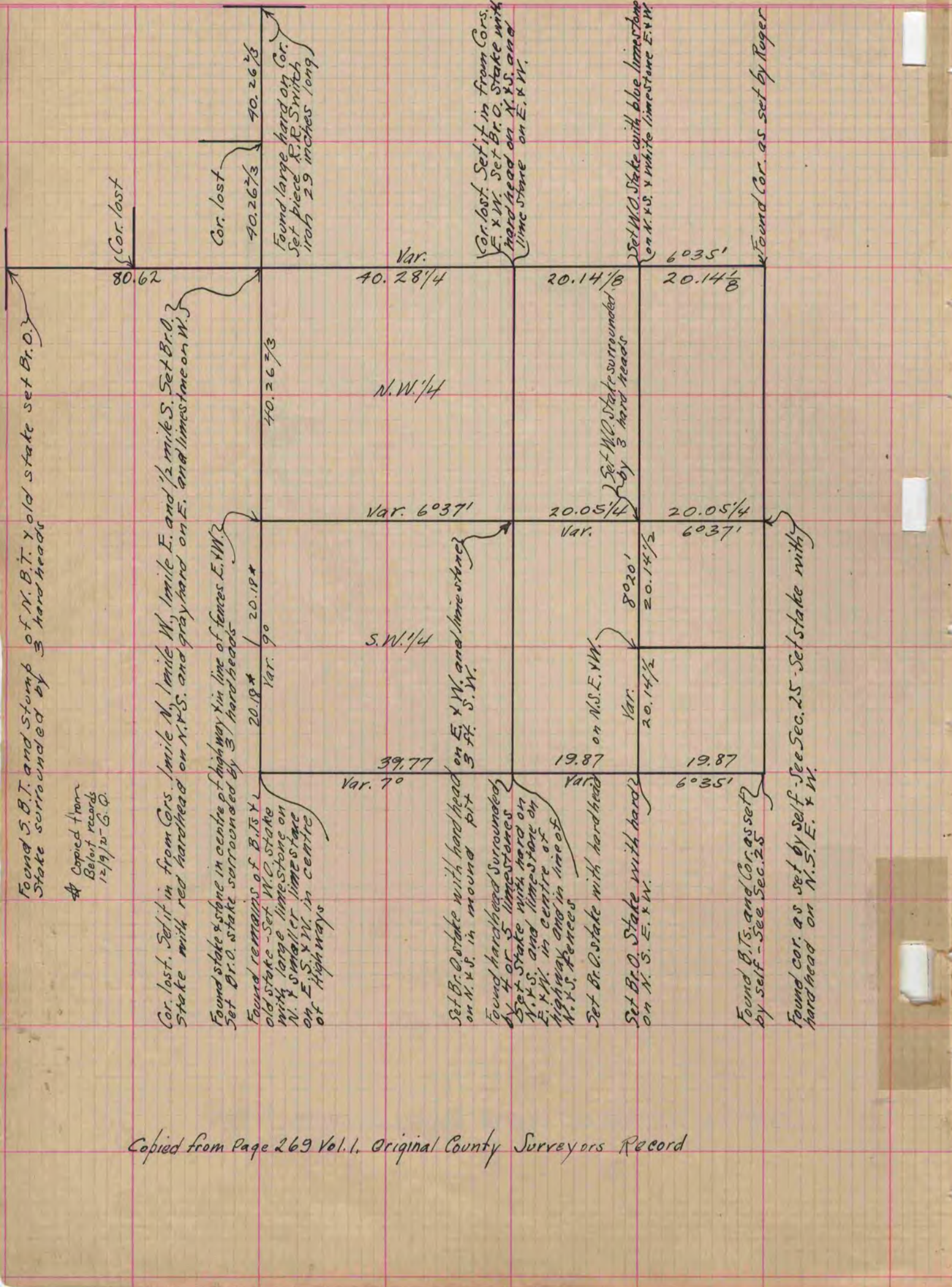
Rock County, Wisconsin, made June the 11 12 1868

I hereby certify that the following is a correct record of said survey as made by me.

COUNTY BUILDING  
CITY OF JANESVILLE

(Signed) S.D. Locke  
R.H.B.

County Surveyor.



Copied from Page 269 Vol. 1. Original County Surveyors Record