

MICROFILMED

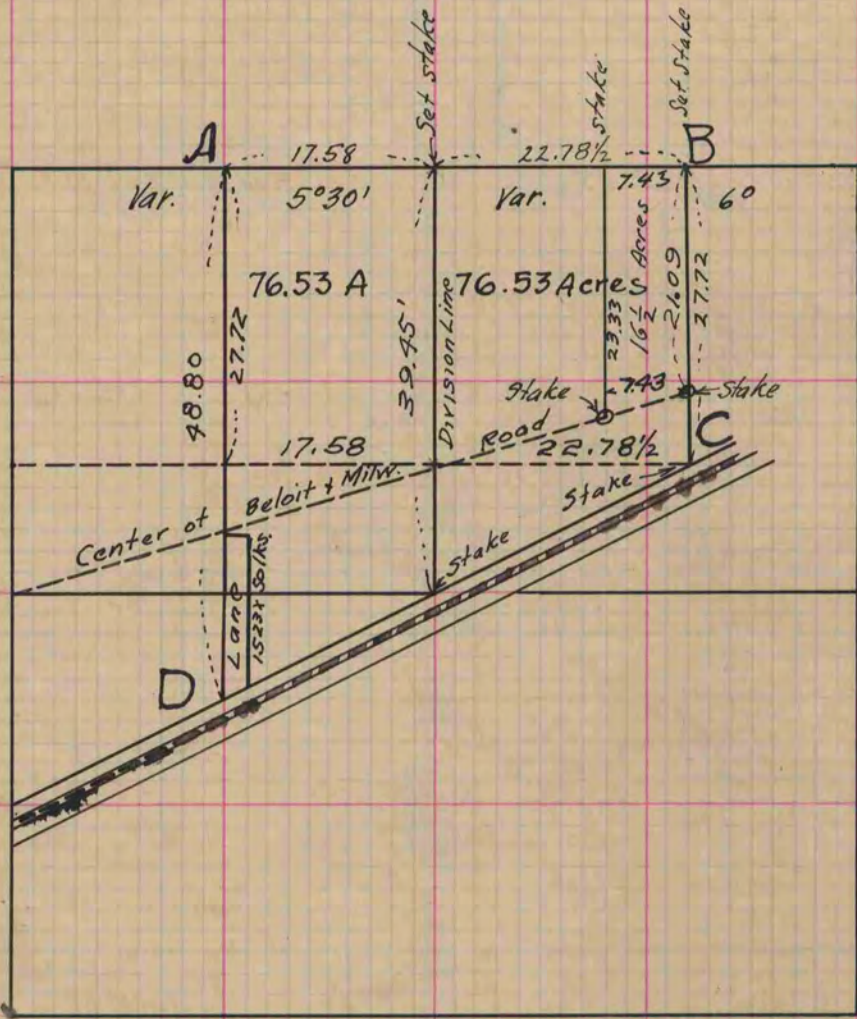
PLAT AND RECORD

Of a Survey on Section 9 T 1 R 14 E. of the 4 P. M. in Clinton Township
Rock County, Wisconsin, made December the 13 1869

I hereby certify that the following is a correct record of said survey as made by me.

COUNTY BUILDING
CITY OF JANESVILLE

(Signed) R.K. Lee Deputy
R.H.B. County Surveyor



Copied from lower 1/2 of Page 10 Vol. 2. Original County Surveyors Record