

MICROFILMED

PLAT AND RECORD

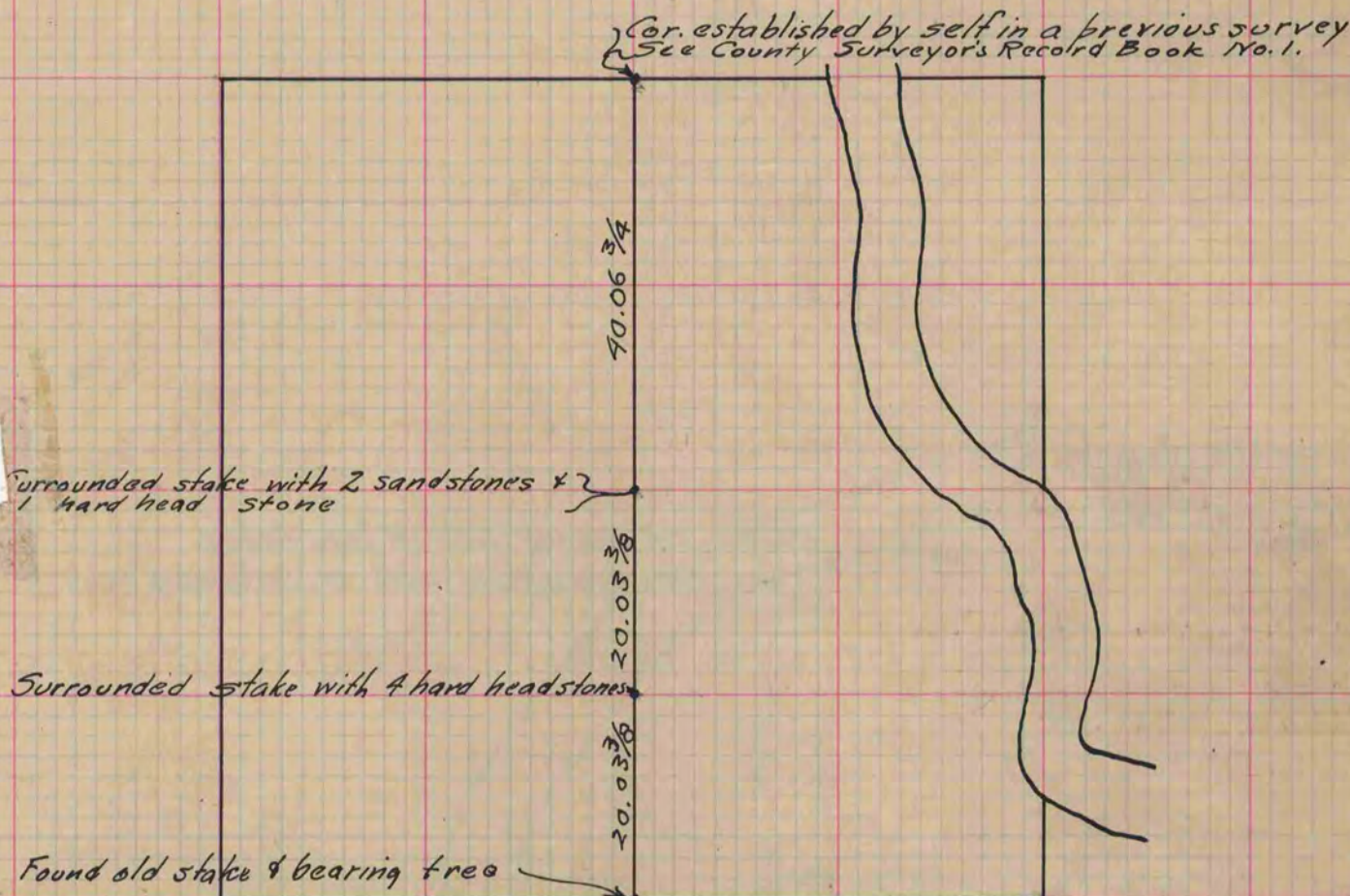
11  
V-2

Of a Survey on Section 15 T 3 R 12 E. of the 4 P. M. in Janesville Township  
Rock County, Wisconsin, made October the 15<sup>th</sup> 1869

I hereby certify that the following is a correct record of said survey as made by me.

COUNTY BUILDING  
CITY OF JANESVILLE

(Signed) Edward Ruger Deputy  
R.H.B. County Surveyor.



The survey was made to ascertain the North & South-Quarter Line. I ran a true line from the South Quarter Corner to the North Quarter Corner. Using the transit in making the survey.

Copied from Upper  $\frac{1}{2}$  of Page 12 Vol. 2. Original County Surveyors Record.