

PLAT AND RECORD

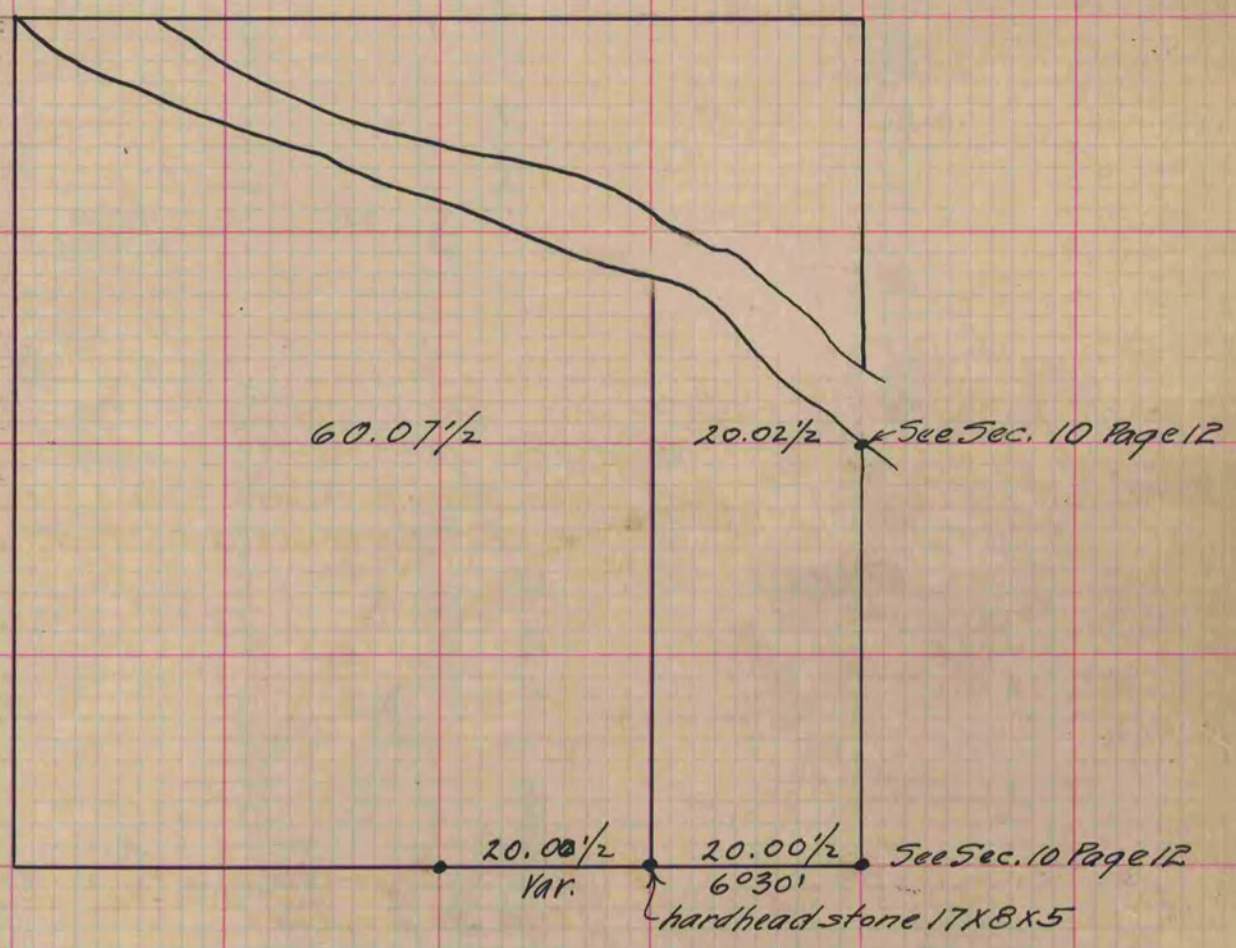
MICROFILMED

Of a Survey on Section 9 T 3 R 12 E. of the 4 P. M. in Janesville Township
Rock County, Wisconsin, made October the 23^d 1869

I hereby certify that the following is a correct record of said survey as made by me.

COUNTY BUILDING
CITY OF JANESVILLE

(Signed) Edward Roger { Deputy
R.H.B. County Surveyor.



Copied from Page 13 Vol. 2 Original County Surveyors Record