

PLAT AND RECORD

MICROFILMED

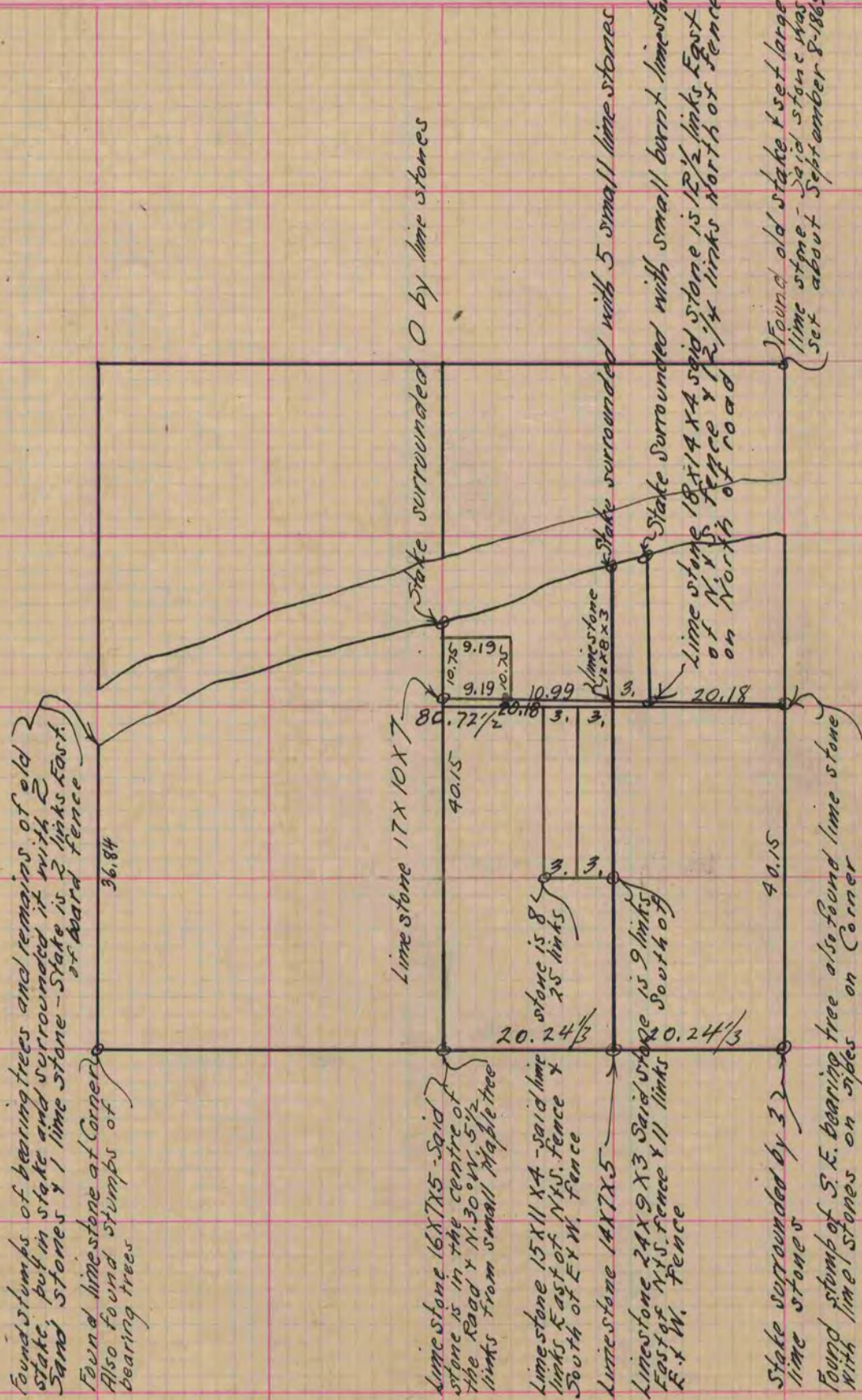
Of a Survey on Section 2 T 2 R 12 E. of the 4 P. M. in Rock Township
 Rock County, Wisconsin, made December the 17-18-20-21 1869

I hereby certify that the following is a correct record of said survey as made by me.

COUNTY BUILDING
CITY OF JANESVILLE

(Signed)

Edward Ruger Deputy
County Surveyor.



Copied from upper 1/2 of Page 14 Vol. 2. Original County Surveyors Record